

Product: BERYL SURFACE LED COMPACT 1000 PLX EDD 34 840**Index:** 19.4129.1623.34

Description

Small downlight ceiling luminaire. Several variants of the diffusers and different light distributions available. Simple assembly. Perfect for lighting corridors, reception, cloakrooms.

Product information

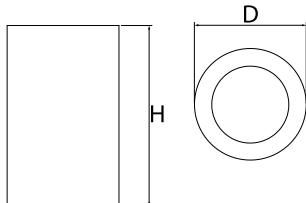
Category	Compact
Family	BERYL SURFACE LED COMPACT
Name	BERYL SURFACE LED COMPACT 1000 PLX EDD 34 840
Index	19.4129.1623.34
EAN	5902107255282



Light and electrical data

Light source	LED
Luminous flux LED [lm]	1328
LED power [W]	8,3
Luminaire luminous flux [lm]	930
Power of luminaire [W]	9,8
Luminaire's light efficiency [lm/W]	94,9
Color of the light [K]	4000
CRI	85
SDCM (LED sources)	3
Beam angle [°]	(C0-C180) / (C90-C270) - 87,4° / 86°
Protection against electric shock	I
Protection degree	IP20
Voltage	220..240 V, 50..60 Hz
Lifetime of LED sources [h]	88000 (1) / 100000 (2) / 100000 (3)
Lx/By	L90/B10 (1) / L80/B10 (2) / L70/B10 (3)
Operating temperature range [°C]	5 ÷ 30
Driver	DIM DALI (EDD)
Power factor cos φ	>0,95
Circuit load capacity	20 (B10), 30 (B16), 32 (C10), 52 (C16)

Mechanical data



Assembly	surface mounted on ceiling
Material	aluminum
Color	RAL 9016 (white)
Diffuser	PLX (PMMA opal)
Impact resistant	IK04
Dimensions [mm]	Ø108 x 175

A graph of light

