

Product: BERYL SURFACE LED COMPACT 3600 MICRO-PRM EDD 34 840

Index: 19.4129.4523.34



Description

Small downlight ceiling luminaire. Several variants of the diffusers and different light distributions available. Simple assembly. Perfect for lighting corridors, reception, cloakrooms.

Product information

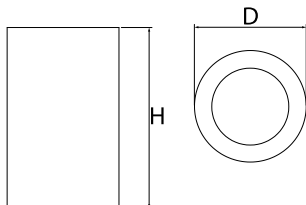
| | |
|----------|---|
| Category | Compact |
| Family | BERYL SURFACE LED COMPACT |
| Name | BERYL SURFACE LED COMPACT 3600 MICRO-PRM EDD 34 840 |
| Index | 19.4129.4523.34 |
| EAN | 5902107255398 |



Light and electrical data

| | |
|-------------------------------------|---|
| Light source | LED |
| Luminous flux LED [lm] | 4111 |
| LED power [W] | 23,3 |
| Luminaire luminous flux [lm] | 3119 |
| Power of luminaire [W] | 26,4 |
| Luminaire's light efficiency [lm/W] | 118,1 |
| Color of the light [K] | 4000 |
| CRI | 85 |
| SDCM (LED sources) | 3 |
| Beam angle [°] | (C0-C180) / (C90-C270) - 53,6° / 57° |
| Protection against electric shock | I |
| Protection degree | IP20 |
| Voltage | 220..240 V, 50..60 Hz |
| Lifetime of LED sources [h] | 86000 (1) / 100000 (2) / 100000 (3) |
| Lx/By | L90/B10 (1) / L80/B10 (2) / L70/B10 (3) |
| Operating temperature range [°C] | 5 ÷ 30 |
| Driver | DIM DALI (EDD) |
| Power factor cos φ | >0,95 |
| Circuit load capacity | 20 (B10), 30 (B16), 32 (C10), 52 (C16) |

Mechanical data



| | |
|------------------|---|
| Assembly | surface mounted on ceiling |
| Material | aluminum |
| Color | RAL 9016 (white) |
| Diffuser | Micro-PRM (micro-prismatic diffuser PMMA) |
| Impact resistant | IK04 |
| Weight [kg] | 0,9 |
| Dimensions [mm] | Ø108 x 175 |

A graph of light

