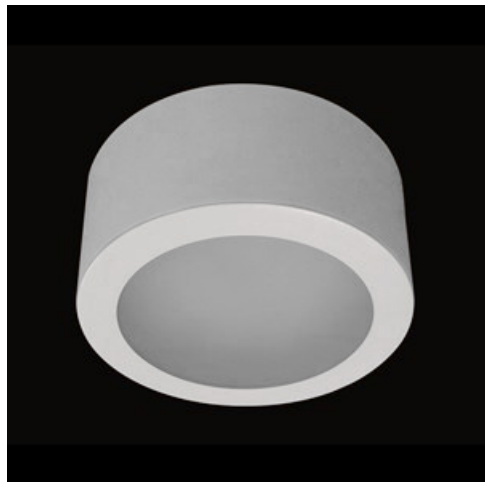


Product: BERYL LED NO 2200 PLX E 34 830

Index: 19.4127.2111.34



Description

Surface mounted luminaire of down light type which is built from powder coated steel sheet. IP20 tightness level. Its diffuser optionally can be made from opal PMMA. BERYL LED NO/NK luminaire is perfect to be used in prestige interiors such as hotels, banks, offices, boutiques, and car showrooms.

Product information

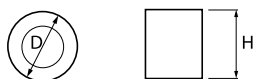
| | |
|----------|--------------------------------|
| Category | Surface mounted luminaires |
| Family | BERYL LED NO |
| Name | BERYL LED NO 2200 PLX E 34 830 |
| Index | 19.4127.2111.34 |



Light and electrical data

| | |
|-------------------------------------|--|
| Light source | LED |
| Luminous flux LED [lm] | 2193 |
| LED power [W] | 15 |
| Luminaire luminous flux [lm] | 1717 |
| Power of luminaire [W] | 16 |
| Luminaire's light efficiency [lm/W] | 107,3 |
| Color of the light [K] | 3000 |
| CRI | >80 |
| SDCM (LED sources) | 3 |
| Beam angle [°] | (C0-C180) / (C90-C270) - 79,4° / 79,2° |
| Protection against electric shock | I |
| Protection degree | IP20 |
| Voltage | 220..240 V, 50..60 Hz |
| Lifetime of LED sources [h] | 60000 |
| Lx/By | L80/B10 |
| Operating temperature range [°C] | 5 ÷ 30 |
| Driver | standard on/off (E) |
| Power factor cos φ | >0,95 |
| Circuit load capacity | 29 (B10), 47 (B16), 49 (C10), 79 (C16) |

Mechanical data



| | |
|------------------|----------------------------|
| Assembly | surface mounted on ceiling |
| Material | steel sheet |
| Color | RAL 9016 (white) |
| Diffuser | PLX (PMMA opal) |
| Impact resistant | IK06 |
| Weight [kg] | 1,62 |
| Dimensions [mm] | Ø210 x 110 |

A graph of light

