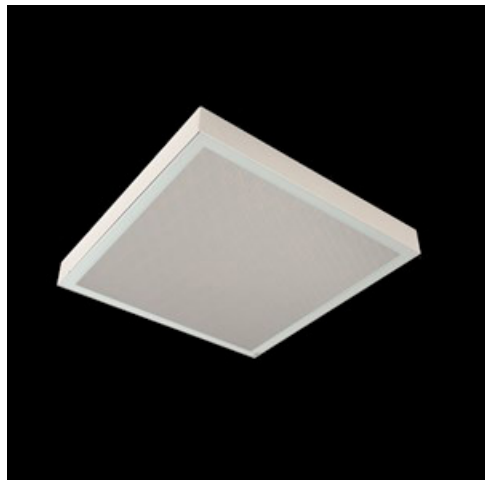


**Product:** RUBIN CLEAN CLASS 3-4 NO FRAME LED 11000 SLMR EDD IP65 34 840 KRG5DK / 574X574MM

**Index:** 19.4108.2723.34



## Description

Luminaire dedicated for the clean rooms of increased cleanliness class ISO 3-4. Surface mounted luminaire equipped in highly efficient LED panels. Luminaire body made from steel sheet, powder coated in white. Its characteristic feature is lack of aluminum frame what allows to exclude the unwished-for contamination in clean rooms. There are no visible elements joining the diffuser and the luminaire body.

## Product information

Category	Clean Class 3-9
Family	RUBIN CLEAN CLASS 3-4 NO FRAME LED
Name	RUBIN CLEAN CLASS 3-4 NO FRAME LED 11000 SLMR EDD IP65 34 840 KRG5DK / 574X574MM
Index	19.4108.2723.34
EAN	5902107572860



## Light and electrical data

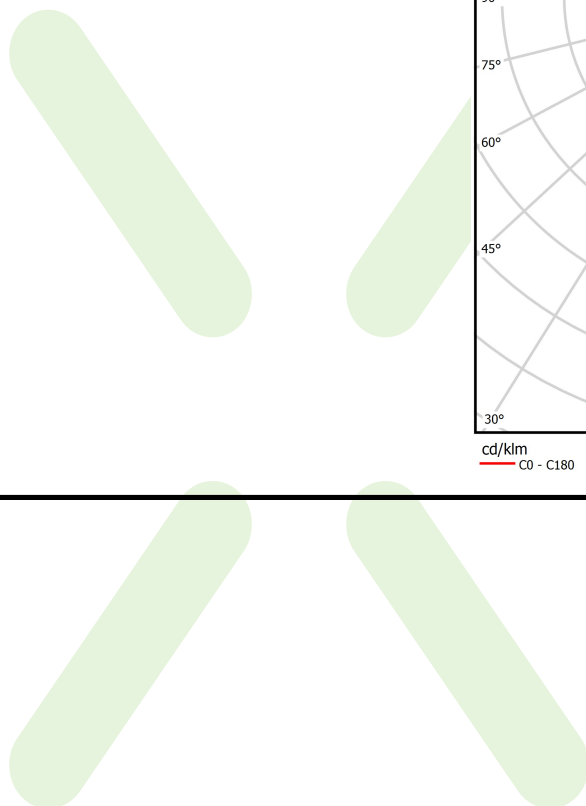
Light source	LED
Luminous flux LED [lm]	11689
LED power [W]	54,5
Luminaire luminous flux [lm]	8591
Power of luminaire [W]	61
Luminaire's light efficiency [lm/W]	140,8
Color of the light [K]	4000
CRI	>80
SDCM (LED sources)	3
Beam angle [°]	(C0-C180) / (C90-C270) - 109,6° / 109,6°
Photobiological risk class (IEC/EN 62471)	RG0
Protection against electric shock	I
Protection degree	IP65
Voltage	220..240 V, 50..60 Hz
Lifetime of LED sources [h]	100000
Lx/By	L80/B10
Operating temperature range [°C]	5 ÷ 30
Driver	DIM DALI (EDD)
Power factor cos φ	>0,95
Circuit load capacity	14 (B10), 23 (B16), 22 (C10), 35 (C16)

**Mechanical data**



Assembly	surface mounted on ceiling
Material	steel sheet
Color	RAL 9016 (white)
Diffuser	SLMR (laminated anti-reflective mat glass)
Impact resistant	IK08
Dimensions [mm]	574 x 574 x 69

**A graph of light**



**Accessories**

Index 6BZBO60980

Name Handle for pane opening

