

**Product:** PARALLEL LED 12000 OPTICS-NARROW E 34 840 / L-2270MM

**Index:** 19.4101.1621.34



## Description

Parallel is an industrial modular system for installing in straight lines. It is an excellent option for lighting industrial premises and warehouses, but is also suitable for offices, supermarkets and commercial spaces. A luminaire mounted in line systems, made of steel sheet, painted in white. To be applied in industrial objects and other places, where high intensity and uniformity of lighting is necessary.

## Product information

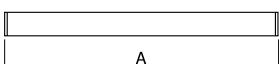
Category	<b>Industrial luminaires</b>
Family	<b>PARALLEL LED</b>
Name	<b>PARALLEL LED 12000 OPTICS-NARROW E 34 840 / L-2270MM</b>
Index	<b>19.4101.1621.34</b>



## Light and electrical data

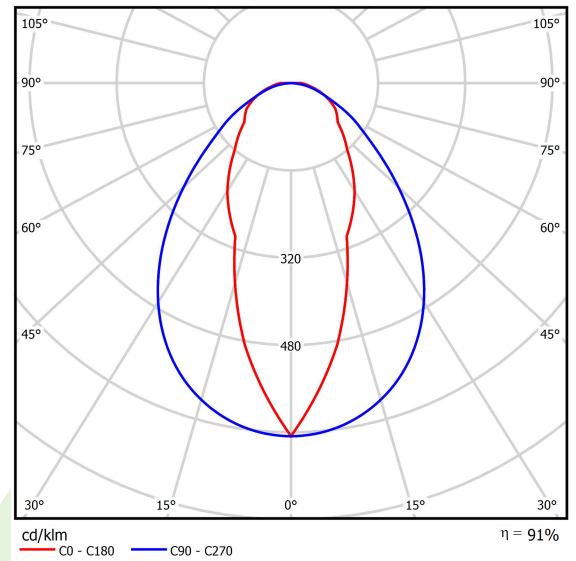
Light source	<b>LED</b>
Luminous flux LED [lm]	<b>12540,4</b>
LED power [W]	<b>68,4</b>
Luminaire luminous flux [lm]	<b>11381,8</b>
Power of luminaire [W]	<b>76,6</b>
Luminaire's light efficiency [lm/W]	<b>148,6</b>
Color of the light [K]	<b>4000</b>
CRI	<b>&gt;80</b>
SDCM (LED sources)	<b>3</b>
Beam angle [°]	<b>(C0-C180) / (C90-C270) - 37,2° / 84,6°</b>
Photobiological risk class (IEC/EN 62471)	<b>RG0</b>
Protection against electric shock	<b>I</b>
Protection degree	<b>IP20</b>
Voltage	<b>220..240 V, 50..60 Hz</b>
Lifetime of LED sources [h]	<b>60000</b>
Lx/By	<b>L80/B10</b>
Operating temperature range [°C]	<b>5 ÷ 35</b>
Driver	<b>standard on/off (E)</b>
Circuit load capacity	<b>11 (B10), 17 (B16), 16 (C10), 27 (C16)</b>

## Mechanical data



Assembly	<b>surface mounted on slings</b>
Material	<b>steel sheet</b>
Color	<b>RAL 9016 (white)</b>
Diffuser	<b>OPTICS (optical system based on lenses)</b>
Impact resistant	<b>IK04</b>
Dimensions [mm]	<b>2270 x 70 x 50</b>

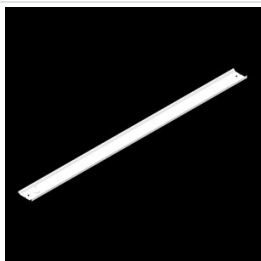
## A graph of light



## Accessories

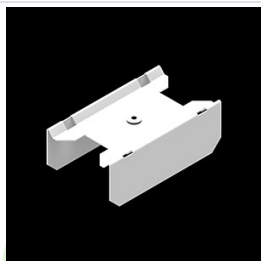
Index 19.4101.0005.34

Name PARALLEL LED ACCESSORIES  
COVER L-2268MM 34



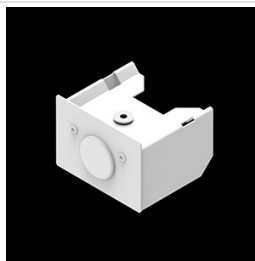
Index 19.4101.0002.00

Name PARALLEL LED ACCESSORIES  
CONNECTOR



Index 19.4101.0001.34

Name PARALLEL LED SET  
ACCESSORIES END-CAP 34



Index 6E1-9875-4-1,5-3X

Name SUSPENSION NEW TYPE-D  
LENGHT-1,5 METER WIRE 3X 1-  
POINT



Index 6E1-9875-3-1,5

Name SUSPENSION NEW TYPE-C  
LENGHT-1,5 METER WITHOUT  
WIRE 1-POINT

