

**Product:** FASAD ODL04 LED 3000 SHM E 20 IP67 840

**Index:** 19.4194.2221.20



## Description

Suitable for ground installation. Pressure-injected aluminum die cast housing, corrosion-resisting, hardened glass diffuser of 10 mm thick, INOX stainless steel outer ring. Ring mounting to the housing is performed with the aid of stainless steel screws. Optic composes high level performance anodized aluminum. Silicone gaskets ensure life-span and exploitation. Luminaire delivered with mounting housing included. The luminaire is equipped with a 3 x 1.5 mm<sup>2</sup> power wire with a length of 1.5 m. Resistance to static load 2000 kg. Luminaire recommended for architectural and natural objects.

## Product information

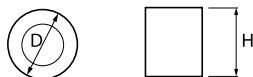
Category	<b>Outdoor luminaires</b>
Family	<b>FASAD ODL04 LED</b>
Name	<b>FASAD ODL04 LED 3000 SHM E 20 IP67 840</b>
Index	<b>19.4194.2221.20</b>



## Light and electrical data

Light source	<b>LED</b>
Luminous flux LED [lm]	<b>3505</b>
LED power [W]	<b>25</b>
Luminaire luminous flux [lm]	<b>3153</b>
Power of luminaire [W]	<b>28</b>
Luminaire's light efficiency [lm/W]	<b>112,6</b>
Color of the light [K]	<b>4000</b>
CRI	<b>&gt;80</b>
SDCM (LED sources)	<b>2</b>
Beam angle [°]	<b>(C0-C180) / (C90-C270) - 71,6° / 71,6°</b>
Protection against electric shock	<b>I</b>
Protection degree	<b>IP67</b>
Voltage	<b>220..240 V, 50..60 Hz</b>
Lifetime of LED sources [h]	<b>76000</b>
Lx/By	<b>L90/B10</b>
Operating temperature range [°C]	<b>-25 ÷ 30</b>
Driver	<b>standard on/off (E)</b>
Power factor cos φ	<b>&gt;0,95</b>
Circuit load capacity	<b>39 (B10), 62 (B16), 65 (C10), 104 (C16)</b>

## Mechanical data



Assembly	<b>into the ground</b>
Material	<b>aluminum</b>
Color	<b>grey</b>
Diffuser	<b>SHM (hardened mat glass)</b>
Impact resistant	<b>IK10</b>
Weight [kg]	<b>4,74</b>
Dimensions [mm]	<b>Ø220 x 300</b>

## A graph of light

