

**Product:** FASAD ODL04 LED 3000 SHM E 20 IP67 830

**Index:** 19.4194.2211.20



## Description

Suitable for ground installation. Pressure-injected aluminum die cast housing, corrosion-resisting, hardened glass diffuser of 10 mm thick, INOX stainless steel outer ring. Ring mounting to the housing is performed with the aid of stainless steel screws. Optic composes high level performance anodized aluminum. Silicone gaskets ensure life-span and exploitation. Luminaire delivered with mounting housing included. The luminaire is equipped with a 3 x 1.5 mm<sup>2</sup> power wire with a length of 1.5 m. Resistance to static load 2000 kg. Luminaire recommended for architectural and natural objects.

## Product information

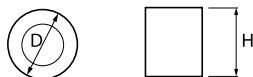
Category	Outdoor luminaires
Family	FASAD ODL04 LED
Name	FASAD ODL04 LED 3000 SHM E 20 IP67 830
Index	19.4194.2211.20



## Light and electrical data

Light source	LED
Luminous flux LED [lm]	3375
LED power [W]	25
Luminaire luminous flux [lm]	3036
Power of luminaire [W]	28
Luminaire's light efficiency [lm/W]	108,4
Color of the light [K]	3000
CRI	>80
SDCM (LED sources)	2
Beam angle [°]	(C0-C180) / (C90-C270) - 71,6° / 71,6°
Protection against electric shock	I
Protection degree	IP67
Voltage	220..240 V, 50..60 Hz
Lifetime of LED sources [h]	76000
Lx/By	L90/B10
Operating temperature range [°C]	-25 ÷ 30
Driver	standard on/off (E)
Power factor cos φ	>0,95
Circuit load capacity	39 (B10), 62 (B16), 65 (C10), 104 (C16)

## Mechanical data



Assembly	into the ground
Material	aluminum
Color	INOX
Diffuser	SHM (hardened mat glass)
Impact resistant	IK10
Weight [kg]	4,74
Dimensions [mm]	Ø220 x 300

## A graph of light

