

Product: FASAD WALL LED 4400 SH SYM MEDIUM E 83 IP65 840 / L-1180mm

Index: 19.4193.4221.83



Description

Weather proof powder painted aluminum housing. Clear stainless steel diffuser. Luminaire is equipped with adjustment allowing proper light flux operation. LED panels are applied as light sources. Recommended for walls and solid base. Fasad Wall LED is dedicated to illuminate walls of architectural objects.

Product information

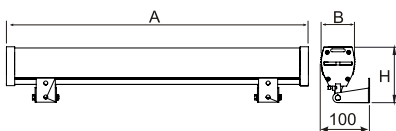
| | |
|----------|--|
| Category | Outdoor luminaires |
| Family | FASAD WALL LED |
| Name | FASAD WALL LED 4400 SH SYM MEDIUM E 83 IP65 840 / L-1180mm |
| Index | 19.4193.4221.83 |



Light and electrical data

| | |
|-------------------------------------|--|
| Light source | LED |
| Luminous flux LED [lm] | 4565 |
| LED power [W] | 23,4 |
| Luminaire luminous flux [lm] | 4046 |
| Power of luminaire [W] | 24,7 |
| Luminaire's light efficiency [lm/W] | 163,8 |
| Color of the light [K] | 4000 |
| CRI | >80 |
| SDCM (LED sources) | 3 |
| Beam angle [°] | (C0-C180) / (C90-C270) - 52,4° / 94,8° |
| Protection against electric shock | I |
| Protection degree | IP65 |
| Voltage | 220..240 V, 50..60 Hz |
| Lifetime of LED sources [h] | 100000 (1) / 147000 (2) |
| Lx/By | L80/B10 (1) / L70/B50 (2) |
| Operating temperature range [°C] | -25 ÷ 30 |
| Driver | standard on/off (E) |
| Power factor cos φ | >0,95 |
| Circuit load capacity | 15 (B10), 24 (B16), 24 (C10), 40 (C16) |

Mechanical data



| | |
|------------------|---------------------------------|
| Assembly | mounted on wall |
| Material | aluminum |
| Color | RAL 7015 (grey) |
| Diffuser | SH (transparent hardened glass) |
| Impact resistant | IK09 |
| Weight [kg] | 4,3 |
| Dimensions [mm] | 1180 x 62 x 114 |

A graph of light

