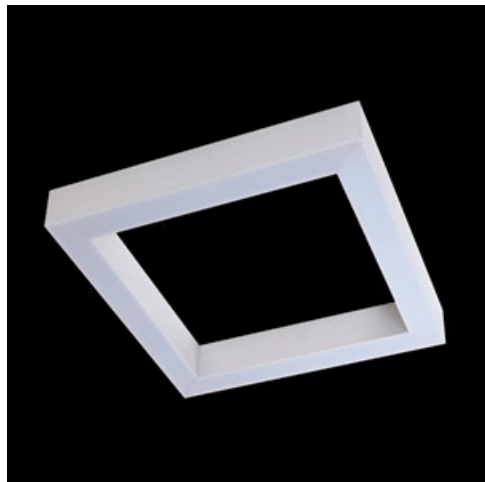


**Product:** X-LINE SQ SURFACE LED 5200 MICRO-PRM EDD 24 840 / 630X630MM

**Index:** 19.4187.1123.24



## Description

Luminaire made from aluminum profile adapted to be mounted on suspensions, or directly on a solid ceiling construction. LED sources of the high illumination efficacy, and the color temperature of 3000 K or 4000 K, make the light source. Diode illumination stream is 5200 lm or 8800 lm. PMMA opal or micro prism diffuser available. Luminaire to be used in offices, conference halls, all structures of public sectors.

## Product information

|          |   |
|----------|---|
| Category | Surface mounted luminaires                                  |
| Family   | X-LINE SQ SURFACE LED                                       |
| Name     | X-LINE SQ SURFACE LED 5200 MICRO-PRM EDD 24 840 / 630X630MM |
| Index    | 19.4187.1123.24   |
| EAN      | 5902107118037   |



## Light and electrical data

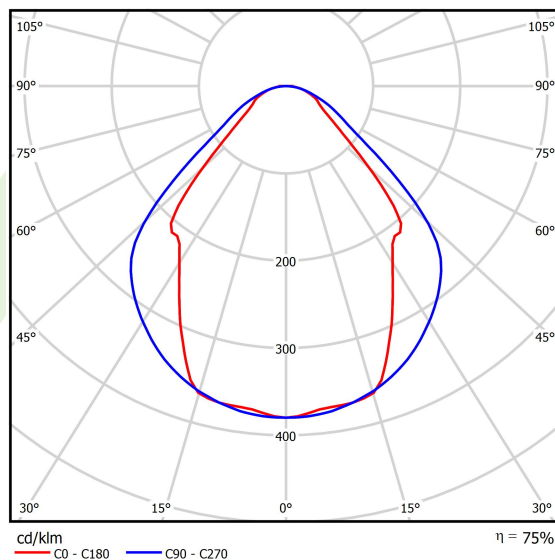
|                                     |  |
|-------------------------------------|--|
| Light source                        | LED                                    |
| Luminous flux LED [lm]              | 5234                                   |
| LED power [W]                       | 26,6                                   |
| Luminaire luminous flux [lm]        | 3942                                   |
| Power of luminaire [W]              | 28,2                                   |
| Luminaire's light efficiency [lm/W] | 139,8                                  |
| Color of the light [K]              | 4000                                   |
| CRI                                 | >80                                    |
| SDCM (LED sources)                  | 3                                      |
| Beam angle [°]                      | (C0-C180) / (C90-C270) - 82,8° / 97,2° |
| Protection against electric shock   | I                                      |
| Protection degree                   | IP20                                   |
| Voltage                             | 220..240 V, 50..60 Hz                  |
| Lifetime of LED sources [h]         | 100000 (1) / 147000 (2)                |
| Lx/By                               | L80/B10 (1) / L70/B50 (2)              |
| Operating temperature range [°C]    | 5 ÷ 30                                 |
| Driver                              | DIM DALI (EDD)                         |
| Power factor cos φ                  | >0,95                                  |
| Circuit load capacity               | 17 (B10), 28 (B16), 26 (C10), 41 (C16) |

## Mechanical data



|                  |   |
|------------------|---|
| Assembly         | directly mounted to ceiling construction or surface mounted on slings using accessories |
| Material         | aluminum  |
| Color            | anodised aluminum   |
| Diffuser         | Micro-PRM (micro-prismatic diffuser PMMA)   |
| Impact resistant | IK04  |
| Weight [kg]      | 5,8   |
| Dimensions [mm]  | 630 x 630 x 72  |

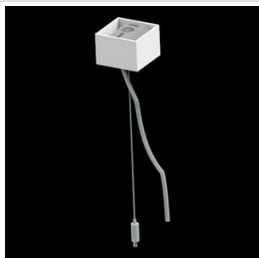
## A graph of light



## Accessories

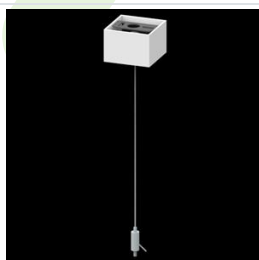
Index 6E1-500KWAN1P-5

Name SUSPENSION NEW TYPE-A 24  
LENGHT 1,5M WIRE 5X 1-POINT



Index 6E1-500KWAN1P-B

Name SUSPENSION NEW TYPE-B 24  
LENGHT 1,5M WITHOUT WIRE 1-POINT



Index 6E1-8670-B-1.5-5X

Name SUSPENSION NEW TYPE-F  
LENGHT-1,5 METER WIRE 5X 1-POINT



Index 19.3272.1205.00

Name SUSPENSION NEW TYPE-E  
LENGHT-1,5 METER WITHOUT WIRE 1-POINT

