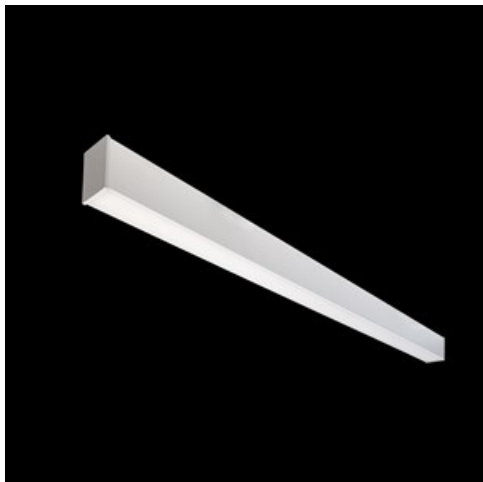


Product: X-LINE SLIM SURFACE LED 5200 MICRO-PRM EDD 24 830 / L-2258MM**Index:** 19.4183.4113.24

Description

The luminaire is made of aluminum profile. Comparing to the traditional X-Line LED, size of the luminaire has been reduced, and all construction has been closed in a narrow 48 mm profile, which gives now a more elegant form of the product. The X-Line Slim uses a PLX or Micro-PRM opal diffuser. All of this allows to manipulate light and create lighting systems, facilitating the creation of comfortable vision in the interiors and their aesthetic appearance. The X-Line Slim luminaire is designed for mounting on ceiling.

Product information

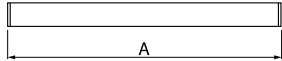
Category	Surface mounted luminaires
Family	X-LINE SLIM SURFACE LED
Name	X-LINE SLIM SURFACE LED 5200 MICRO-PRM EDD 24 830 / L-2258MM
Index	19.4183.4113.24



Light and electrical data

Light source	LED
Luminous flux LED [lm]	5076
LED power [W]	24,8
Luminaire luminous flux [lm]	3756,2
Power of luminaire [W]	28,2
Luminaire's light efficiency [lm/W]	133,2
Color of the light [K]	3000
CRI	>80
SDCM (LED sources)	3
Beam angle [°]	(C0-C180) / (C90-C270) - 88,4° / 86°
Photobiological risk class (IEC/EN 62471)	RG0
Protection against electric shock	I
Protection degree	IP40
Voltage	220..240 V, 50..60 Hz
Lifetime of LED sources [h]	100000
Lx/By	L80/B10
Operating temperature range [°C]	5 ÷ 35
Driver	DIM DALI (EDD)
Power factor cos φ	>0,95
Circuit load capacity	17 (B10), 28 (B16), 26 (C10), 41 (C16)

Mechanical data



Assembly	surface mounted on ceiling
Material	aluminum
Color	anodised aluminum
Diffuser	Micro-PRM (micro-prismatic diffuser PMMA)
Impact resistant	IK04
Dimensions [mm]	2258 x 48 x 70

A graph of light

