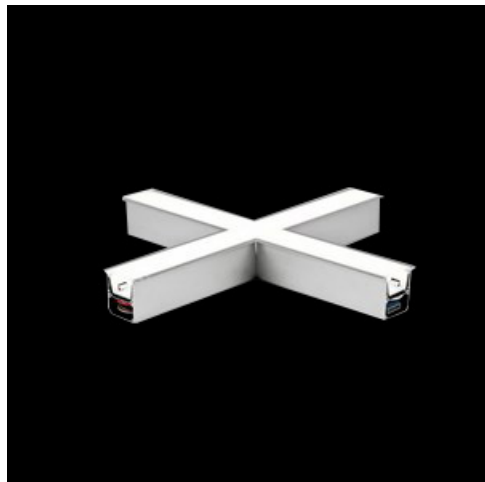


**Product:** X-LINE G/K LED 8800 PLX EDD 24 830 LINE-1S / CONNECTOR TYPE-X 600/600/600/600

**Index:** 19.4175.2113.24



## Description

The group of X-line luminaires is made of aluminum profile with opal diffuser or micro-prismatic diffuser. The luminaires may be joined with special connectors providing great freedom in arranging elements of the system and its functionality.

## Product information

Category	Recessed luminaires
Family	X-LINE G/K LED CONNECTOR X
Name	X-LINE G/K LED 8800 PLX EDD 24 830 LINE-1S / CONNECTOR TYPE-X 600/600/600/600
Index	19.4175.2113.24
EAN	5902107078201

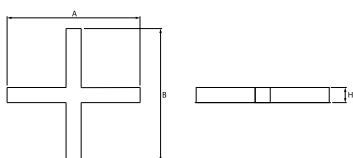


## Light and electrical data

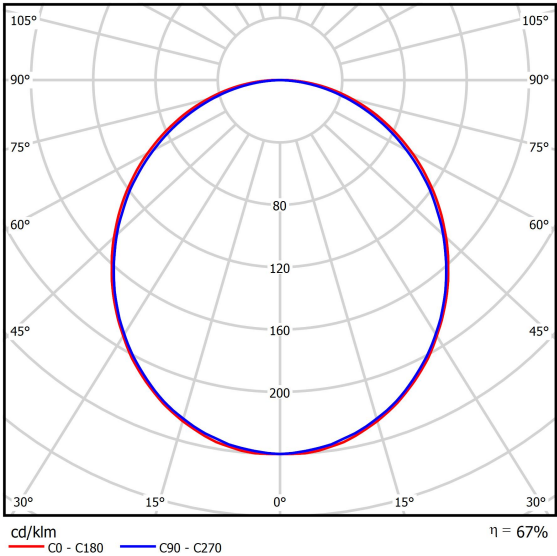
Light source	LED
Luminous flux LED [lm]	8811
LED power [W]	46,8
Luminaire luminous flux [lm]	5873
Power of luminaire [W]	49,1
Luminaire's light efficiency [lm/W]	119,6
Color of the light [K]	3000
CRI	>80
SDCM (LED sources)	3
Beam angle [°]	(C0-C180) / (C90-C270) - 109° / 107,2°
Protection against electric shock	I
Protection degree	IP20/44
Voltage	220..240 V, 50..60 Hz
Lifetime of LED sources [h]	100000 (1) / 147000 (2)
Lx/By	L80/B10 (1) / L70/B50 (2)
Operating temperature range [°C]	5 ÷ 30
Driver	DIM DALI (EDD)
Power factor cos φ	>0,95
Circuit load capacity	14 (B10), 23 (B16), 22 (C10), 35 (C16)

## Mechanical data

Assembly	mounted in plasterboard ceilings
Material	aluminum
Color	anodised aluminum
Diffuser	PLX (PMMA opal)
Impact resistant	IK04
Dimensions [mm]	1126 x 1126 x 134
Mounting hole [mm]	1126 x 1126 x 70



A graph of light



Accessories

Index 0E1XLL-SLED  
Name X-LINE Clamp for line luminaires

