

Product: X-LINE G/K LED 5200 PLX EDD 24 840 LINE-1S / CONNECTOR TYPE-X 600/600/600/600

Index: 19.4175.1123.24



Description

The group of X-line luminaires is made of aluminum profile with opal diffuser or micro-prismatic diffuser. The luminaires may be joined with special connectors providing great freedom in arranging elements of the system and its functionality.

Product information

Category	Recessed luminaires
Family	X-LINE G/K LED CONNECTOR X
Name	X-LINE G/K LED 5200 PLX EDD 24 840 LINE-1S / CONNECTOR TYPE-X 600/600/600/600
Index	19.4175.1123.24
EAN	5902107078133

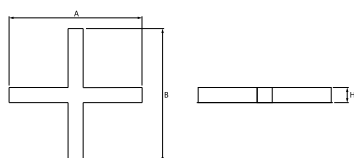


Light and electrical data

Light source	LED
Luminous flux LED [lm]	5234
LED power [W]	26,6
Luminaire luminous flux [lm]	3489
Power of luminaire [W]	28,2
Luminaire's light efficiency [lm/W]	123,7
Color of the light [K]	4000
CRI	>80
SDCM (LED sources)	3
Beam angle [°]	(C0-C180) / (C90-C270) - 109° / 107,2°
Protection against electric shock	I
Protection degree	IP20/44
Voltage	220..240 V, 50..60 Hz
Lifetime of LED sources [h]	100000 (1) / 147000 (2)
Lx/By	L80/B10 (1) / L70/B50 (2)
Operating temperature range [°C]	5 ÷ 30
Driver	DIM DALI (EDD)
Power factor cos φ	>0,95
Circuit load capacity	17 (B10), 28 (B16), 26 (C10), 41 (C16)

Mechanical data

Assembly	mounted in plasterboard ceilings
Material	aluminum
Color	anodised aluminum
Diffuser	PLX (PMMA opal)
Impact resistant	IK04
Dimensions [mm]	1126 x 1126 x 134
Mounting hole [mm]	1126 x 1126 x 70



A graph of light



Accessories

Index 0E1XLL-SLED
Name X-LINE Clamp for line luminaires

