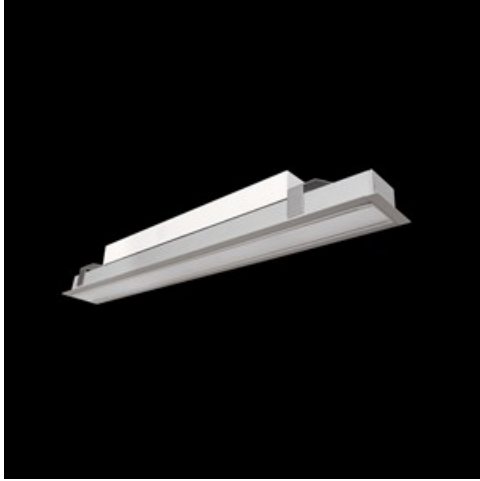


Product: X-LINE SLIM RECESSED LED 4400 MICRO-PRM EDD 34 830 / L-1160MM

Index: 19.4145.6213.34



Description

Luminaire made of aluminium profile. Compared to traditional X-Line G/K LED, the size has been reduced and the structure enclosed in a narrower profile, which allows a more elegant aspect of the product. X-Line Slim Recessed uses an opaline Micro PRM diffuser. All this makes it possible to adjust light and create lighting systems, easing the creation of a comfortable view of indoor spaces and their aesthetics. X-Line Slim Recessed is designed for built-in installation on ceilings.

Product information

Category	Recessed luminaires
Family	X-LINE SLIM RECESSED LED
Name	X-LINE SLIM RECESSED LED 4400 MICRO-PRM EDD 34 830 / L-1160MM
Index	19.4145.6213.34



Light and electrical data

Light source	LED
Luminous flux LED [lm]	4442
LED power [W]	21,8
Luminaire luminous flux [lm]	3287,1
Power of luminaire [W]	24,8
Luminaire's light efficiency [lm/W]	132,5
Color of the light [K]	3000
CRI	>80
SDCM (LED sources)	3
Beam angle [°]	(C0-C180) / (C90-C270) - 88,4° / 86°
Photobiological risk class (IEC/EN 62471)	RG0
Protection against electric shock	I
Protection degree	IP40
Voltage	220..240 V, 50..60 Hz
Lifetime of LED sources [h]	100000
Lx/By	L80/B10
Operating temperature range [°C]	5 ÷ 35
Driver	DIM DALI (EDD)
Power factor cos φ	>0,95
Circuit load capacity	17 (B10), 28 (B16), 26 (C10), 41 (C16)

Mechanical data



Assembly	mounted in plasterboard ceilings
Material	aluminum
Color	RAL 9016 (white)
Diffuser	Micro-PRM (micro-prismatic diffuser PMMA)
Impact resistant	IK04
Dimensions [mm]	1160 x 70 x 75
Mounting hole [mm]	1150 x 55

A graph of light

