

Product: SNAKE V LED 2600 PLX E 24 830

Index: 19.4093.1111.24



Description

Luminaire equipped with the highly efficient LED source. Body made from aluminum profile. Optical system provides regular light distribution on diffuser. There are two kinds of diffusers available: opal and PMMA micro-prism. Luminaire adapted to be mounted on suspensions or directly on a solid ceiling construction. The suspended version is equipped with the suspension system which is 1500 mm long, and has the smooth regulation of the suspension length. These luminaires may be dedicated to decorate the representative places such as: entrances, receptions, restaurants, halls, etc.

Product information

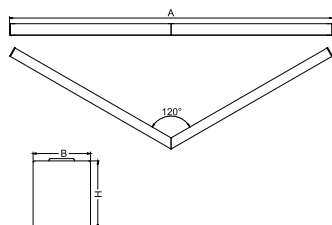
Category	Architectural luminaires
Family	SNAKE V LED
Name	SNAKE V LED 2600 PLX E 24 830
Index	19.4093.1111.24



Light and electrical data

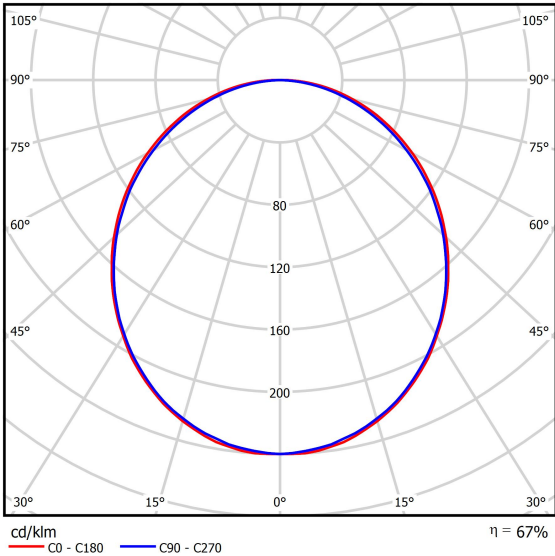
Light source	LED
Luminous flux LED [lm]	2525
LED power [W]	13,3
Luminaire luminous flux [lm]	1683
Power of luminaire [W]	14,4
Luminaire's light efficiency [lm/W]	116,9
Color of the light [K]	3000
CRI	>80
SDCM (LED sources)	3
Beam angle [°]	(C0-C180) / (C90-C270) - 109° / 107,2°
Protection against electric shock	I
Protection degree	IP20
Voltage	220..240 V, 50..60 Hz
Lifetime of LED sources [h]	100000 (1) / 147000 (2)
Lx/By	L80/B10 (1) / L70/B50 (2)
Operating temperature range [°C]	5 ÷ 30
Driver	standard on/off (E)
Power factor cos φ	>0,95
Circuit load capacity	46 (B10), 74 (B16), 72 (C10), 115 (C16)

Mechanical data



Assembly	directly mounted to ceiling construction or surface mounted on slings using accessories
Material	aluminum
Color	anodised aluminum
Diffuser	PLX (PMMA opal)
Impact resistant	IK04
Weight [kg]	2,77
Dimensions [mm]	590/590 x 63 x 74

A graph of light



Accessories

Index 6E1-500KWAN1P-3

Name SUSPENSION NEW TYPE-A 24
LENGHT 1,5M WIRE 3X 1-POINT

A white, rectangular luminaire with a small, square, recessed light source. It is suspended by a thin, white, braided cable. The luminaire is shown against a black background.

Index 6E1-8670-B-1,5-3X

Name SUSPENSION NEW TYPE-F
LENGHT-1,5 METER WIRE 3X 1-
POINT

A white, rectangular luminaire with a small, square, recessed light source. It is suspended by a thin, white, braided cable. The luminaire is shown against a black background.

Index 19.3272.1205.00

Name SUSPENSION NEW TYPE-E
LENGHT-1,5 METER WITHOUT
WIRE 1-POINT

A white, rectangular luminaire with a small, square, recessed light source. It is suspended by a thin, white, braided cable. The luminaire is shown against a black background.

Index 6E1-500KWAN1P-B

Name SUSPENSION NEW TYPE-B 24
LENGHT 1,5M WITHOUT WIRE 1-
POINT

A white, rectangular luminaire with a small, square, recessed light source. It is suspended by a thin, white, braided cable. The luminaire is shown against a black background.