

**Product:** X-LINE SLIM L-DOWN LED 4400 MICRO-PRM E 34 840 / L-1138MM S-1,5M

**Index:** 19.4089.4621.34



## Description

The luminaire is made of aluminum profile. There is only lower half-space light distribution (L-DOWN). Comparing to the traditional X-Line LED, size of the luminaire has been reduced, and all construction has been closed in a narrow 48 mm profile, which gives now a more elegant form of the product. The X-Line Slim uses a PLX or Micro-PRM opal diffuser or lenses. All of this allows to manipulate light and create lighting systems, facilitating the creation of comfortable vision in the interiors and their aesthetic appearance. The X-Line Slim luminaire is designed for mounting on suspensions. There is the possibility of fitting a luminaire with a sound-absorbing housing.

## Product information

|          |  |
|----------|--|
| Category | Surface mounted luminaires                                       |
| Family   | X-LINE SLIM LED  |
| Name     | X-LINE SLIM L-DOWN LED 4400 MICRO-PRM E 34 840 / L-1138MM S-1,5M |
| Index    | 19.4089.4621.34  |
| EAN      | 5902107221645  |



## Light and electrical data

|   |  |
|---|--|
| Light source                              | LED                                    |
| Luminous flux LED [lm]                    | 4676                                   |
| LED power [W]                             | 21,8                                   |
| Luminaire luminous flux [lm]              | 3460,2                                 |
| Power of luminaire [W]                    | 24,8                                   |
| Luminaire's light efficiency [lm/W]       | 139,5                                  |
| Color of the light [K]                    | 4000                                   |
| CRI                                       | >80                                    |
| SDCM (LED sources)                        | 3                                      |
| Beam angle [°]                            | (C0-C180) / (C90-C270) - 88,4° / 86°   |
| Photobiological risk class (IEC/EN 62471) | RG0                                    |
| Protection against electric shock         | I                                      |
| Protection degree                         | IP40                                   |
| Voltage                                   | 220..240 V, 50..60 Hz                  |
| Lifetime of LED sources [h]               | 100000                                 |
| Lx/By                                     | L80/B10                                |
| Operating temperature range [°C]          | 5 ÷ 35                                 |
| Driver                                    | standard on/off (E)                    |
| Power factor cos φ                        | >0,95                                  |
| Circuit load capacity                     | 25 (B10), 40 (B16), 39 (C10), 62 (C16) |

Mechanical data



|                  |   |
|------------------|---|
| Assembly         | surface mounted on slings                 |
| Material         | aluminum                                  |
| Color            | RAL 9016 (white)                          |
| Diffuser         | Micro-PRM (micro-prismatic diffuser PMMA) |
| Impact resistant | IK04                                      |
| Weight [kg]      | 2,17                                      |
| Dimensions [mm]  | 1138 x 48 x 70                            |

A graph of light



Accessories

Index 6E1-500KW34K-3  
Name SUSPENSION NEW TYPE-A+B 34  
LENGHT 1,5M WIRE 3X SET



Index 6E1-8670-B-1,5-3X  
Name SUSPENSION NEW TYPE-F  
LENGHT-1,5 METER WIRE 3X 1-  
POINT



Index 19.3272.1205.00  
Name SUSPENSION NEW TYPE-E  
LENGHT-1,5 METER WITHOUT  
WIRE 1-POINT



Index 6E1-500KWB34K-3  
Name SUSPENSION NEW TYPE-A+E 34  
LENGHT 1,5M WIRE 3X SET



Index 6E1-9875-4-1,5-3X  
Name SUSPENSION NEW TYPE-D  
LENGHT-1,5 METER WIRE 3X 1-  
POINT



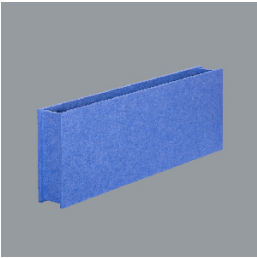
Index 6E1-9875-3-1,5  
Name SUSPENSION NEW TYPE-C  
LENGHT-1,5 METER WITHOUT  
WIRE 1-POINT



Index 19.4089.0004.00  
Name X-LINE SLIM SOUND  
ABSORBENT L-1138MM RED



Index 19.4089.0005.00  
Name X-LINE SLIM SOUND  
ABSORBENT L-1138MM BLUE



Index 19.4089.0006.00  
Name X-LINE SLIM SOUND  
ABSORBENT L-1138MM GREY

