

**Product:** X-LINE SLIM LOW UGR L-DOWN LED 4200 RASTER DAISY-BLACK-WIDE E 34 830 / L-1126MM S-1,5M

**Index:** 19.4088.1211.34



## Description

The luminaire is made of aluminum profile. Light distribution in the lower half-space. Comparing to the traditional X-Line LED, size of the luminaire has been reduced, and all construction has been closed in a narrow 48 mm profile, which gives now a more elegant form of the product. The X-Line Slim uses an anti-glare louver. It allows to create lighting systems, facilitating the creation of comfortable vision in the interiors. The X-Line Slim luminaire is designed for mounting on suspensions.

## Product information

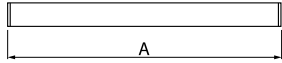
|          |  |
|----------|--|
| Category | Surface mounted luminaires   |
| Family   | X-LINE SLIM LOW UGR L-DOWN LED   |
| Name     | X-LINE SLIM LOW UGR L-DOWN LED 4200 RASTER DAISY-BLACK-WIDE E 34 830 / L-1126MM S-1,5M |
| Index    | 19.4088.1211.34  |
| EAN      | 5902107554927  |



## Light and electrical data

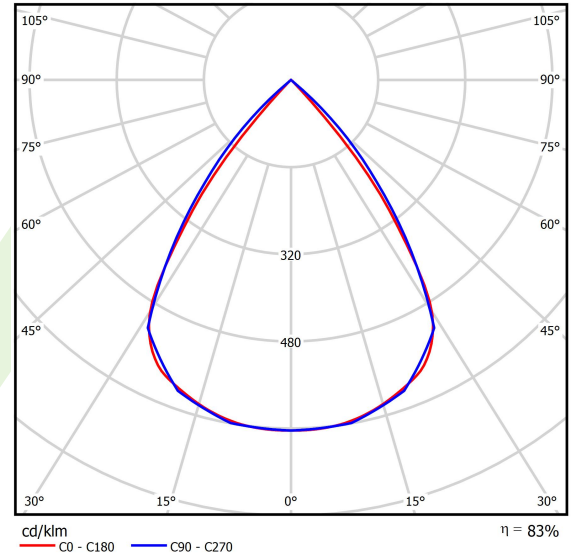
|   |  |
|---|--|
| Light source                              | LED                                    |
| Luminous flux LED [lm]                    | 4212                                   |
| LED power [W]                             | 22,4                                   |
| Luminaire luminous flux [lm]              | 3496                                   |
| Power of luminaire [W]                    | 25,5                                   |
| Luminaire's light efficiency [lm/W]       | 137,1                                  |
| Color of the light [K]                    | 3000                                   |
| CRI                                       | >80                                    |
| SDCM (LED sources)                        | 3                                      |
| Beam angle [°]                            | (C0-C180) / (C90-C270) - 72,6° / 74,4° |
| Photobiological risk class (IEC/EN 62471) | RG0                                    |
| Protection against electric shock         | I                                      |
| Protection degree                         | IP40                                   |
| Voltage                                   | 220..240 V, 50..60 Hz                  |
| Lifetime of LED sources [h]               | 100000                                 |
| Lx/By                                     | L80/B10                                |
| Operating temperature range [°C]          | 5 ÷ 35                                 |
| Driver                                    | standard on/off (E)                    |
| Power factor cos φ                        | >0,95                                  |
| Circuit load capacity                     | 25 (B10), 40 (B16), 39 (C10), 62 (C16) |

**Mechanical data**



|                  |                            |
|------------------|----------------------------|
| Assembly         | surface mounted on slings  |
| Material         | aluminum                   |
| Color            | RAL 9016 (white)           |
| Diffuser         | RASTER (anti-glare louver) |
| Impact resistant | IK04                       |
| Dimensions [mm]  | 1126 x 48 x 70             |

**A graph of light**



## Accessories

Index 6E1-500KW34K-3

Name SUSPENSION NEW TYPE-A+B 34  
LENGHT 1,5M WIRE 3X SET



Index 6E1-8670-B-1,5-3X

Name SUSPENSION NEW TYPE-F  
LENGHT-1,5 METER WIRE 3X 1-  
POINT



Index 19.3272.1205.00

Name SUSPENSION NEW TYPE-E  
LENGHT-1,5 METER WITHOUT  
WIRE 1-POINT



Index 6E1-500KWB34K-3

Name SUSPENSION NEW TYPE-A+E 34  
LENGHT 1,5M WIRE 3X SET



Index 6E1-9875-4-1,5-3X

Name SUSPENSION NEW TYPE-D  
LENGHT-1,5 METER WIRE 3X 1-  
POINT



Index 6E1-9875-3-1,5

Name SUSPENSION NEW TYPE-C  
LENGHT-1,5 METER WITHOUT  
WIRE 1-POINT

