

**Product:** X-LINE SLIGHT LOW UGR L-DOWN LED 1200 LOUVER EDD 21 840 / L-800MM S-1,5M**Index:** 19.4084.1123.21

## Description

Linear luminaire with minimized width. Made of 34 mm wide and 68 mm high aluminum profile. Mounted on slings. Direct light distribution. The optical system is fulfilled by an anti-glare raster with symmetrical lenses of 45° distribution. Luminaire in single version. Available colours: anodized aluminum, black (RAL 9005), grey (RAL 9006), white (RAL 9016) or any RAL colour on request. End cap aluminum, painted in the colour of the body. Application of luminaires typically for office spaces.

## Product information

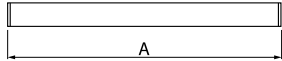
Category	Surface mounted luminaires
Family	X-LINE SLIGHT LOW UGR LED
Name	X-LINE SLIGHT LOW UGR L-DOWN LED 1200 LOUVER EDD 21 840 / L-800MM S-1,5M
Index	19.4084.1123.21



## Light and electrical data

Light source	LED
Luminous flux LED [lm]	1243,2
LED power [W]	6,4
Luminaire luminous flux [lm]	891,4
Power of luminaire [W]	8
Luminaire's light efficiency [lm/W]	111,4
Color of the light [K]	4000
CRI	>80
SDCM (LED sources)	3
Beam angle [°]	(C0-C180) / (C90-C270) - 46° / 44,6°
Photobiological risk class (IEC/EN 62471)	RG0
Protection against electric shock	I
Protection degree	IP40
Voltage	220..240 V, 50..60 Hz
Lifetime of LED sources [h]	145000
Lx/By	L90/B10
Operating temperature range [°C]	5 ÷ 35
Driver	DIM DALI (EDD)
Power factor cos φ	>0,95
Circuit load capacity	20 (B10), 31 (B16), 33 (C10), 53 (C16)

**Mechanical data**



Assembly	surface mounted on slings
Material	aluminum
Color	RAL 9006 (grey)
Diffuser	LOUVER (anti-glare louver)
Impact resistant	IK04
Dimensions [mm]	800 x 34 x 68

**A graph of light**

