

Product: BERYL SURFACE NEW LED O-3 5400 PLX E IP44 34 840**Index:** 19.4043.9521.34

Description

Downlight surface mounted luminaire made of cast aluminum. Luminaire is dedicated for prestigious interiors such as hotels, banks and offices of higher standard. Owing to the newest components and renowned producers of LEDs applied it was possible to build such luminaires which save energy consumption comparing with traditional solutions.

Product information

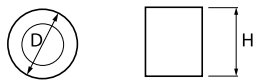
Category	Surface mounted luminaires
Family	BERYL SURFACE NEW LED O IP44
Name	BERYL SURFACE NEW LED O-3 5400 PLX E IP44 34 840
Index	19.4043.9521.34



Light and electrical data

Light source	LED
Luminous flux LED [lm]	6494
LED power [W]	34,4
Luminaire luminous flux [lm]	4265
Power of luminaire [W]	39,3
Luminaire's light efficiency [lm/W]	108,5
Color of the light [K]	4000
CRI	85
SDCM (LED sources)	2
Beam angle [°]	(C0-C180) / (C90-C270) - 94,6° / 94,4°
Photobiological risk class (IEC/EN 62471)	RG0
Protection against electric shock	I
Protection degree	IP44
Voltage	220..240 V, 50..60 Hz
Lifetime of LED sources [h]	83000 (1) / 100000 (2) / 100000 (3)
Lx/By	L90/B10 (1) / L80/B10 (2) / L70/B10 (3)
Operating temperature range [°C]	5 ÷ 30
Driver	standard on/off (E)
Power factor cos φ	>0,95
Circuit load capacity	22 (B10), 35 (B16), 37 (C10), 59 (C16)

Mechanical data



Assembly	surface mounted on ceiling
Material	aluminum
Color	RAL 9016 (white)
Diffuser	PLX (PMMA opal)
Impact resistant	IK04
Weight [kg]	3,18
Dimensions [mm]	Ø215 x 182

A graph of light

