

Product: BERYL SURFACE NEW LED O-3 5400 EDD IP44 34 840

Index: 19.4043.7523.34



Description

Downlight surface mounted luminaire made of cast aluminum. Luminaire is dedicated for prestigious interiors such as hotels, banks and offices of higher standard. Owing to the newest components and renowned producers of LEDs applied it was possible to build such luminaires which save energy consumption comparing with traditional solutions.

Product information

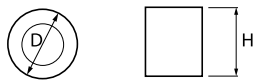
Category	Surface mounted luminaires
Family	BERYL SURFACE NEW LED O IP44
Name	BERYL SURFACE NEW LED O-3 5400 EDD IP44 34 840
Index	19.4043.7523.34



Light and electrical data

Light source	LED
Luminous flux LED [lm]	6494
LED power [W]	34,4
Luminaire luminous flux [lm]	4808
Power of luminaire [W]	39,3
Luminaire's light efficiency [lm/W]	122,3
Color of the light [K]	4000
CRI	85
SDCM (LED sources)	2
Beam angle [°]	(C0-C180) / (C90-C270) - 71,6° / 71,6°
Photobiological risk class (IEC/EN 62471)	RG0
Protection against electric shock	I
Protection degree	IP44
Voltage	220..240 V, 50..60 Hz
Lifetime of LED sources [h]	83000 (1) / 100000 (2) / 100000 (3)
Lx/By	L90/B10 (1) / L80/B10 (2) / L70/B10 (3)
Operating temperature range [°C]	5 ÷ 30
Driver	DIM DALI (EDD)
Power factor cos φ	>0,95
Circuit load capacity	20 (B10), 30 (B16), 32 (C10), 52 (C16)

Mechanical data



Assembly	surface mounted on ceiling
Material	aluminum
Color	RAL 9016 (white)
Diffuser	transparent glass
Impact resistant	IK06
Weight [kg]	3,2
Dimensions [mm]	Ø215 x 182

A graph of light

