

Product: BERYL SURFACE NEW LED O-3 2800 E 34 840

Index: 19.4041.7421.34



Description

Downlight surface mounted luminaire made of cast aluminum. Luminaire is dedicated for prestigious interiors such as hotels, banks and offices of higher standard. Owing to the newest components and renowned producers of LEDs applied it was possible to build such luminaires which save energy consumption comparing with traditional solutions.

Product information

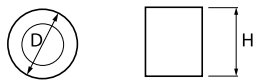
Category	Surface mounted luminaires
Family	BERYL SURFACE NEW LED O
Name	BERYL SURFACE NEW LED O-3 2800 E 34 840
Index	19.4041.7421.34
EAN	5902107266196



Light and electrical data

Light source	LED
Luminous flux LED [lm]	3108
LED power [W]	16,2
Luminaire luminous flux [lm]	2384
Power of luminaire [W]	18,4
Luminaire's light efficiency [lm/W]	129,6
Color of the light [K]	4000
CRI	80
SDCM (LED sources)	2
Beam angle [°]	(C0-C180) / (C90-C270) - 74,2° / 73,6°
Photobiological risk class (IEC/EN 62471)	RG0
Protection against electric shock	I
Protection degree	IP20
Voltage	220..240 V, 50..60 Hz
Lifetime of LED sources [h]	91000 (1) / 100000 (2) / 100000 (3)
Lx/By	L90/B10 (1) / L80/B10 (2) / L70/B10 (3)
Operating temperature range [°C]	5 ÷ 30
Driver	standard on/off (E)
Power factor cos φ	>0,95
Circuit load capacity	29 (B10), 47 (B16), 49 (C10), 79 (C16)

Mechanical data



Assembly	surface mounted on ceiling
Material	aluminum
Color	RAL 9016 (white)
Diffuser	transparent glass
Impact resistant	IK06
Weight [kg]	2,52
Dimensions [mm]	Ø215 x 166

A graph of light

