

Product: BACKPANEL LED 5800 PLX E 34 IP20/44 840

Index: 19.3213.0018.34



Description

Modern LED panel dedicated to be mounted on suspended modular ceilings, cardboard suspended ceilings (using adaptive frame), directly on the ceiling (using adaptive frame) or using adaptive frame and suspensions. Equipped with the highly efficient LED sources. Direct light distribution. Luminaire body made from steel sheet. PMMA opal diffuser. Colour of luminaire - white. CRI>80. Luminaire dedicated for the public use structure like offices, conference rooms, classrooms, lecture halls etc.

Product information

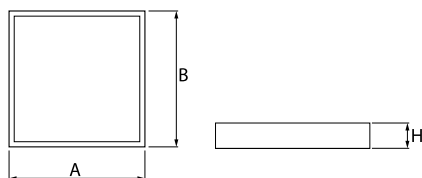
| | |
|----------|---|
| Category | Recessed luminaires |
| Family | BACKPANEL LED |
| Name | BACKPANEL LED 5800 PLX E 34 IP20/44 840 |
| Index | 19.3213.0018.34 |



Light and electrical data

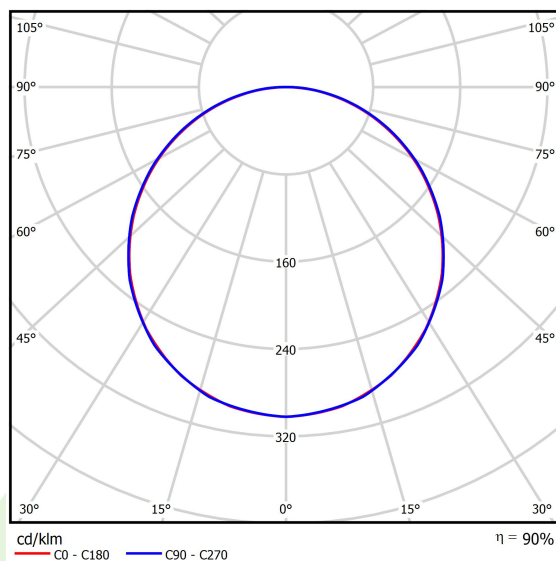
| | |
|---|--|
| Light source | LED |
| Luminous flux LED [lm] | 5662 |
| LED power [W] | 35,5 |
| Luminaire luminous flux [lm] | 5071 |
| Power of luminaire [W] | 40,2 |
| Luminaire's light efficiency [lm/W] | 126,1 |
| Color of the light [K] | 4000 |
| CRI | >80 |
| SDCM (LED sources) | 3 |
| Beam angle [°] | (C0-C180) / (C90-C270) - 113,8° / 114,6° |
| Photobiological risk class (IEC/EN 62471) | RG0 |
| Protection against electric shock | II |
| Protection degree | IP20/44 |
| Voltage | 220..240 V, 50..60 Hz |
| Lifetime of LED sources [h] | 100000 |
| Lx/By | L80/B10 |
| Operating temperature range [°C] | 5 ÷ 30 |
| Driver | standard on/off (E) |
| Circuit load capacity | 22 (B10), 35 (B16), 37 (C10), 59 (C16) |

Mechanical data



| | |
|------------------|---|
| Assembly | mounted in module ceilings as well as plasterboard ceilings, directly mounted to ceiling construction and surface mounted on slings using accessories |
| Material | steel sheet |
| Color | RAL 9016 (white) |
| Diffuser | PLX (PMMA opal) |
| Impact resistant | IK04 |
| Weight [kg] | 3,1 |
| Dimensions [mm] | 596 x 596 x 34 |

A graph of light



Accessories

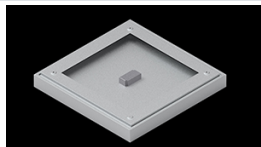
Index 19.3213.0079.34

Name BACKPANEL LED RECESSED
ACCESSORIES 34 / 600X600



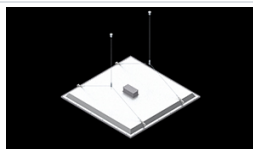
Index 19.3213.0073.34

Name BACKPANEL LED SURFACE
ACCESSORIES 34 / 600X600



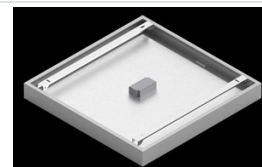
Index 19.3213.0076.34

Name BACKPANEL LED / RIM LED
ACCESSORIES SET WITH
SUSPENSION 1,5M / 600X600



Index 19.3213.0082.34

Name BACKPANEL COMPACT LED
NASTROPOWA RAMKA
ADAPTACYJNA 34 / 600X600



Index 19.3213.0083.34

Name BACKPANEL LED SURFACE
ACCESSORIES BASIC 34 /
600X600

