

Product: STREETPARK S LED COMPACT HO 10000 SHM E IP66 22 757

Index: 19.3250.0003.22



Description

Powder painted aluminum cast housing highly weather proof. Luminaire is equipped with adjustable handle designed for mounting on posts and arms of 60 mm diameter. Level of tightness IP66. Diffuser is made of hardened glass. Following color temperatures are available: 5700 K.

Product information

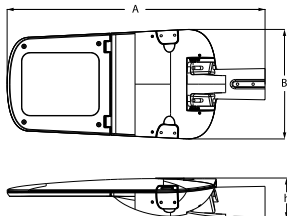
Category	Compact
Family	STREETPARK LED COMPACT
Name	STREETPARK S LED COMPACT HO 10000 SHM E IP66 22 757
Index	19.3250.0003.22



Light and electrical data

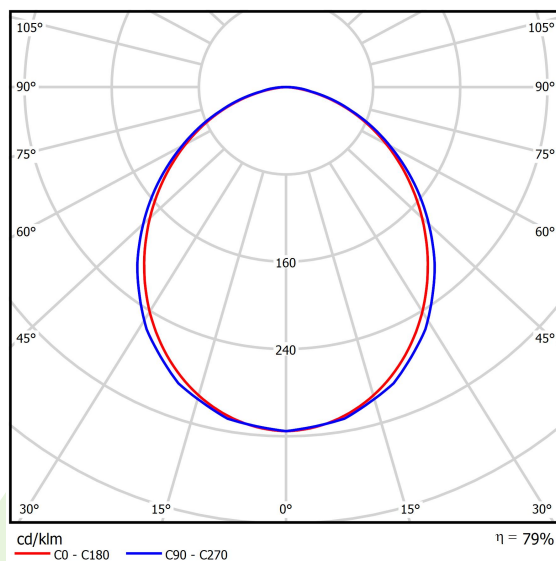
Light source	LED
Luminous flux LED [lm]	11175
LED power [W]	76
Luminaire luminous flux [lm]	8808
Power of luminaire [W]	83
Luminaire's light efficiency [lm/W]	106,1
Color of the light [K]	5700
CRI	>70
SDCM (LED sources)	5
Beam angle [°]	(C0-C180) / (C90-C270) - 98,8° / 102°
Protection against electric shock	I
Protection degree	IP66
Voltage	220..240 V, 50..60 Hz
Lifetime of LED sources [h]	100000
Lx/By	L80/B10
Operating temperature range [°C]	-40 ÷ 40
Driver	standard on/off (E)
Power factor cos φ	>0,95
Circuit load capacity	6 (B10), 10 (B16), 10 (C10), 17 (C16)

Mechanical data



Assembly	mounted on poles
Material	aluminum
Color	RAL 9007 (dark gray)
Diffuser	SHM (hardened mat glass)
Impact resistant	IK09
Dimensions [mm]	628 x 266 x 99

A graph of light



Accessories

Index 50ELR76/60

Name REDUKTOR R76/60x100



Index 27LBD-REDUCTION LBD

Name [A] STREETPARK pole reduction
LBD-S05S & LBD-S05M



Index 6BW-M8X40DIN914

Name WKREŃ M8x40 DIN 914 A2
DOCISKOWY NIERDZEWNY
IMBUS Z KOŃCEM STOZKOWYM
NA KLUCZ IMBUSOWY



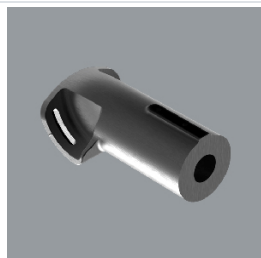
Index 27LBD-Holder Fi76

Name STREETPARK Holder Fi 76 mm,
RAL7021



Index 27LBD-HOLDER FI35

Name STREETPARK Holder Fi 35 mm
(arm Fi32) , RAL7021



Index 19.3100.0001.21

Name Pole Mounting Bracket for
STREETPARK Fi 50



Index 19.3100.0002.21

Name Pole Mounting Bracket for
STREETPARK Fi 60

