

Product: STREETPARK S LED COMPACT HO 5000 SHM E IP66 22 757

Index: 19.3250.0001.22



Description

Powder painted aluminum cast housing highly weather proof. Luminaire is equipped with adjustable handle designed for mounting on posts and arms of 60 mm diameter. Level of tightness IP66. Diffuser is made of hardened glass. Following color temperatures are available: 5700 K.

Product information

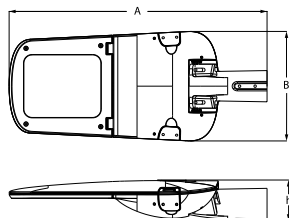
Category	Compact
Family	STREETPARK LED COMPACT
Name	STREETPARK S LED COMPACT HO 5000 SHM E IP66 22 757
Index	19.3250.0001.22
EAN	5902107208189



Light and electrical data

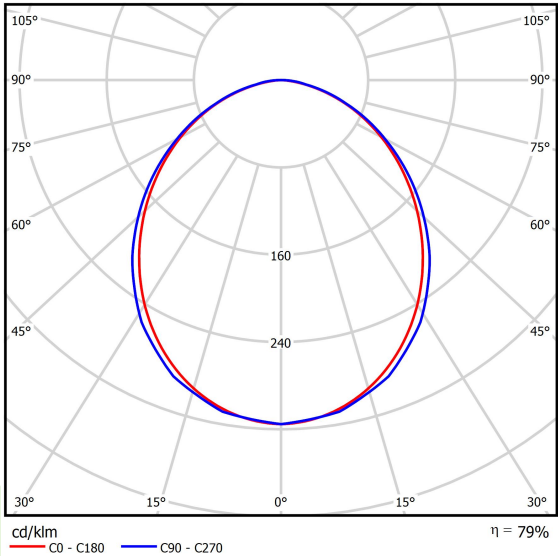
Light source	LED
Luminous flux LED [lm]	5588
LED power [W]	38
Luminaire luminous flux [lm]	4404
Power of luminaire [W]	42
Luminaire's light efficiency [lm/W]	104,9
Color of the light [K]	5700
CRI	>70
Beam angle [°]	(C0-C180) / (C90-C270) - 98,8° / 102°
Protection against electric shock	I
Protection degree	IP66
Voltage	220..240 V, 50..60 Hz
Lifetime of LED sources [h]	100000
Lx/By	L80/B10
Operating temperature range [°C]	-40 ÷ 40
Driver	standard on/off (E)
Power factor cos φ	>0,95
Circuit load capacity	22 (B10), 35 (B16), 37 (C10), 59 (C16)

Mechanical data



Assembly	mounted on poles
Material	aluminum
Color	RAL 9007 (dark grey)
Diffuser	SHM (hardened mat glass)
Impact resistant	IK09
Dimensions [mm]	628 x 266 x 99

A graph of light



Accessories

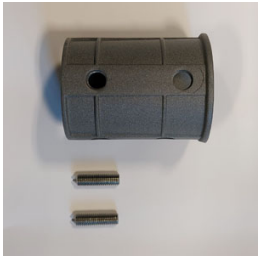
Index	50ELR76/60
Name	REDUKTOR R76/60x100



Index	27LBD-REDUCTION LBD
Name	[A] STREETPARK pole reduction LBD-S05S & LBD-S05M



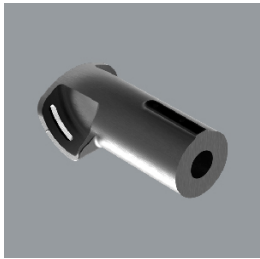
Index	6BW-M8X40DIN914
Name	WKREŃ M8x40 DIN 914 A2 DOCISKOWY NIERDZEWNY IMBUS Z KOŃCEM STOŻKOWYM NA KLUCZ IMBUSOWY



Index	27LBD-Holder Fi76
Name	STREETPARK Holder Fi 76 mm, RAL7021



Index	27LBD-HOLDER Fi35
Name	STREETPARK Holder Fi 35 mm (arm Fi32) , RAL7021



Index	19.3100.0001.21
Name	Pole Mounting Bracket for STREETPARK Fi 50



Index	19.3100.0002.21
Name	Pole Mounting Bracket for STREETPARK Fi 60

