

Product: BERYL LED N12/230 3000 PLX EDD 34 IP65 840

Index: 19.3139.0002.34



Description

Beryl LED N12/220 luminaire which is characterized by its simple compact construction and high efficiency. Luminaire is highly resistant to dust and water activity what is proved by IP65 level. Luminaire dedicated to be surface mounted.

Product information

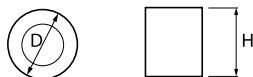
Category	Outdoor luminaires
Family	BERYL LED N12/230
Name	BERYL LED N12/230 3000 PLX EDD 34 IP65 840
Index	19.3139.0002.34



Light and electrical data

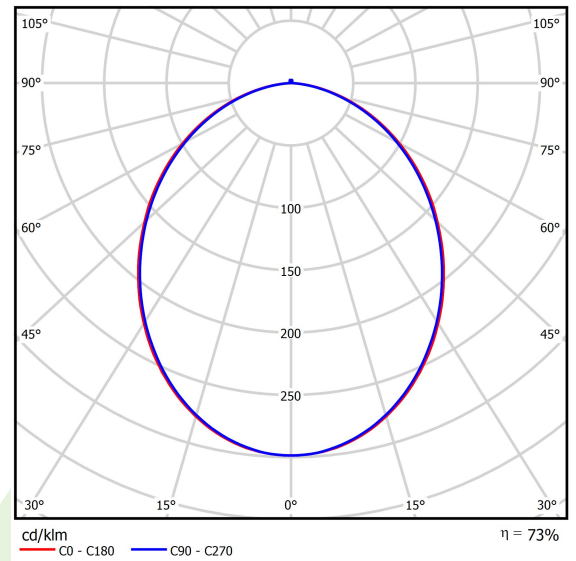
Light source	LED
Luminous flux LED [lm]	3108
LED power [W]	16,2
Luminaire luminous flux [lm]	2277
Power of luminaire [W]	18,4
Luminaire's light efficiency [lm/W]	123,8
Color of the light [K]	4000
CRI	85
SDCM (LED sources)	2
Beam angle [°]	(C0-C180) / (C90-C270) - 99° / 97,8°
Protection against electric shock	I
Protection degree	IP65
Voltage	220..240 V, 50..60 Hz
Lifetime of LED sources [h]	45000 (1) / 50000 (2) / 67000 (3)
Lx/By	L90/B10 (1) / L80/B10 (2) / L70/B10 (3)
Operating temperature range [°C]	-25 ÷ 30
Driver	DIM DALI (EDD)
Power factor cos φ	>0,95
Circuit load capacity	50 (B10), 80 (B16), 61 (C10), 98 (C16)

Mechanical data



Assembly	surface mounted on ceiling
Material	aluminum
Color	RAL 9016 (white)
Diffuser	PLX (PMMA opal)
Impact resistant	IK04
Weight [kg]	2,2
Dimensions [mm]	Ø120 x 230

A graph of light



Luminous flux tolerance +/- 10%. Power tolerance +/- 10%.
Technical data may be changed. Photos of the luminaires may differ from reality.
Date of last update: 02-07-2022