

**Product:** STREETPARK MINI LED PREMIUM HO 5500 STREET-M E IP66 21 740

**Index:** 19.3176.0011.21



## Description

Powder painted aluminum cast housing highly weather proof. Luminaire is equipped with adjustable handle designed for mounting on posts and arms of 48 mm diameter. Level of tightness IP66. Diffuser is made of hardened glass. Following color temperatures are available: 4000 K. It is possible to program an autonomous multi-level or manual power reduction for specific customer needs by using a specialized power supply in the luminaire. The luminaires have overvoltage protection as standard based on the functionality of the power supplies.

## Product information

Category	Outdoor luminaires
Family	STREETPARK MINI LED PREMIUM
Name	STREETPARK MINI LED PREMIUM HO 5500 STREET-M E IP66 21 740
Index	19.3176.0011.21
EAN	5902107272814

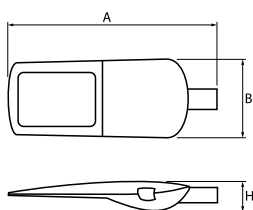


## Light and electrical data

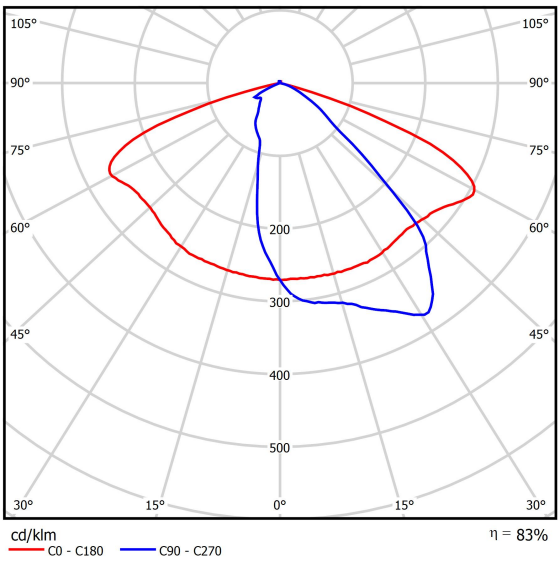
Light source	LED
Luminous flux LED [lm]	5755
LED power [W]	37
Luminaire luminous flux [lm]	4751
Power of luminaire [W]	42
Luminaire's light efficiency [lm/W]	113,1
Color of the light [K]	4000
CRI	>70
Beam angle [°]	street light distribution
Protection against electric shock	I
Protection degree	IP66
Voltage	220..240 V, 50..60 Hz
Lifetime of LED sources [h]	100000
Lx/By	L80/B10
Operating temperature range [°C]	-40 ÷ 40
Driver	standard on/off (E)
Power factor cos φ	>0,95
Circuit load capacity	15 (B10), 25 (B16), 25 (C10), 40 (C16)

## Mechanical data

Assembly	mounted on poles
Material	aluminum
Color	RAL 9006 (grey)
Diffuser	hardened transparent glass
Impact resistant	IK09
Weight [kg]	3,3
Dimensions [mm]	507 x 209 x 144

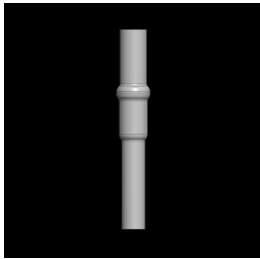


A graph of light



Accessories

Index 50EL60/48X100  
Name Redukcja słupa 60/48x100 do  
oprawy



Index 19.3100.0001.21  
Name Pole Mounting Bracket for  
STREETPARK Fi 50



Index 19.3100.0002.21  
Name Pole Mounting Bracket for  
STREETPARK Fi 60

