

Product: STREETPARK MINI LED PREMIUM HO 3500 AREA E IP66 21 740

Index: 19.3176.0001.21



Description

Powder painted aluminum cast housing highly weather proof. Luminaire is equipped with adjustable handle designed for mounting on posts and arms of 48 mm diameter. Level of tightness IP66. Diffuser is made of hardened glass. Following color temperatures are available: 4000 K. It is possible to program an autonomous multi-level or manual power reduction for specific customer needs by using a specialized power supply in the luminaire. The luminaires have overvoltage protection as standard based on the functionality of the power supplies.

Product information

Category	Outdoor luminaires
Family	STREETPARK MINI LED PREMIUM
Name	STREETPARK MINI LED PREMIUM HO 3500 AREA E IP66 21 740
Index	19.3176.0001.21

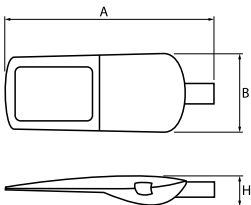


Light and electrical data

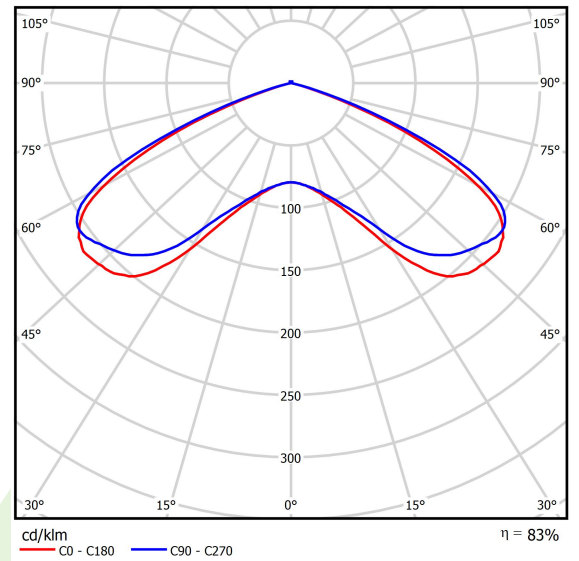
Light source	LED
Luminous flux LED [lm]	3280
LED power [W]	22
Luminaire luminous flux [lm]	2710
Power of luminaire [W]	25
Luminaire's light efficiency [lm/W]	108,4
Color of the light [K]	4000
CRI	>70
SDCM (LED sources)	5
Beam angle [°]	(C0-C180) / (C90-C270) - 132,8° / 135,2°
Protection against electric shock	I
Protection degree	IP66
Voltage	220..240 V, 50..60 Hz
Lifetime of LED sources [h]	60000
Lx/By	L70/B10
Operating temperature range [°C]	-40 ÷ 40
Driver	standard on/off (E)
Power factor cos φ	>0,95
Circuit load capacity	15 (B10), 25 (B16), 25 (C10), 40 (C16)

Mechanical data

Assembly	mounted on poles
Material	aluminum
Color	RAL 9006 (grey)
Diffuser	hardened transparent glass
Impact resistant	IK09
Dimensions [mm]	507 x 209 x 144



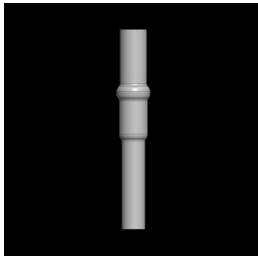
A graph of light



Accessories

Index 50EL60/48X100

Name Reduction of pole 60/48x100 for luminaire



Luminous flux tolerance +/- 10%. Power tolerance +/- 10%.
Technical data may be changed. Photos of the luminaires may differ from reality.
Date of last update: 10-08-2022