

**Product:** STREETPARK M LED PREMIUM HE 5000 STREET-S E IP66 22 757

**Index:** 19.3174.0002.22



## Description

Powder painted aluminum cast housing highly weather proof. Luminaire is equipped with adjustable handle designed for mounting on posts and arms of 60 mm diameter. Optional handles are also available for mounting on poles with end diameters from 32 mm to 76 mm. Level of tightness IP66. Diffuser is made of hardened glass. Following color temperatures are available: 5700 K. It is possible to program an autonomous multi-level or manual power reduction for specific customer needs by using a specialized power supply in the luminaire. The luminaires have overvoltage protection as standard based on the functionality of the power supplies. Optionally, the luminaires can be equipped with an additional voltage surge protector that does not require interference during the assembly and disassembly of the power supply system. \*Selected luminaire variants are available with ENEC certificate.

## Product information

Category	<b>Outdoor luminaires</b>
Family	<b>STREETPARK M LED PREMIUM</b>
Name	<b>STREETPARK M LED PREMIUM HE 5000 STREET-S E IP66 22 757</b>
Index	<b>19.3174.0002.22</b>

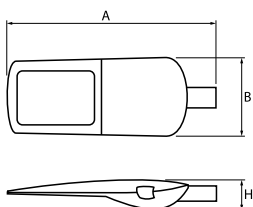


## Light and electrical data

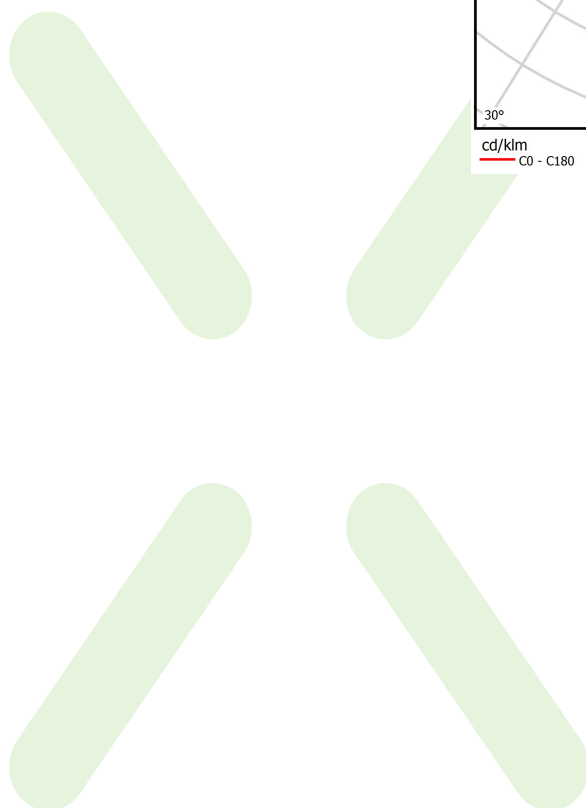
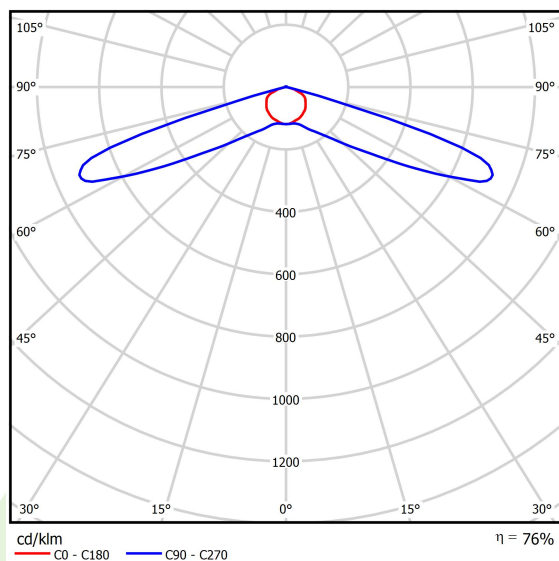
Light source	<b>LED</b>
Luminous flux LED [lm]	<b>5287</b>
LED power [W]	<b>32</b>
Luminaire luminous flux [lm]	<b>4038</b>
Power of luminaire [W]	<b>35</b>
Luminaire's light efficiency [lm/W]	<b>115,4</b>
Color of the light [K]	<b>5700</b>
CRI	<b>&gt;70</b>
SDCM (LED sources)	<b>5</b>
Beam angle [°]	<b>street light distribution</b>
Protection against electric shock	<b>I</b>
Protection degree	<b>IP66</b>
Voltage	<b>220..240 V, 50..60 Hz</b>
Lifetime of LED sources [h]	<b>100000</b>
Lx/By	<b>L80/B10</b>
Operating temperature range [°C]	<b>-40 ÷ 40</b>
Driver	<b>standard on/off (E)</b>
Power factor cos φ	<b>&gt;0,95</b>
Circuit load capacity	<b>6 (B10), 10 (B16), 10 (C10), 17 (C16)</b>

## Mechanical data

Assembly	<b>mounted on poles</b>
Material	<b>aluminum</b>
Color	<b>RAL 9007 (dark gray)</b>
Diffuser	<b>hardened transparent glass</b>
Impact resistant	<b>IK09</b>
Weight [kg]	<b>7,7</b>
Dimensions [mm]	<b>718 x 311 x 103</b>



## A graph of light



## Accessories

Index 50ELR76/60

Name REDUKTOR R76/60x100



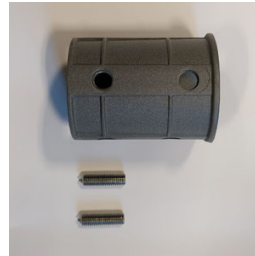
Index 27LBD-REDUCTION LBD

Name [A] STREETPARK pole reduction LBD-S05S & LBD-S05M



Index 6BW-M8X40DIN914

Name M8x40 DIN 914 A2 NON-NEW PRESS-FIT CYLINDER WITH TAPER END FOR CYLINDER KEYS



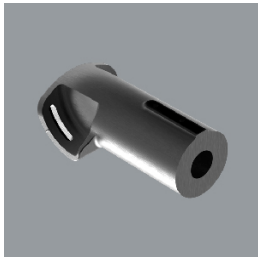
Index 27LBD-Holder Fi76

Name STREETPARK Holder Fi 76 mm, RAL7021



Index 27LBD-HOLDER Fi35

Name STREETPARK Holder Fi 35 mm (arm Fi32) , RAL7021



Index 19.3100.0001.21

Name Pole Mounting Bracket for STREETPARK Fi 50



Index 19.3100.0002.21

Name Pole Mounting Bracket for STREETPARK Fi 60

