

Product: STREETPARK M LED PREMIUM HE 5000 STREET-ZEBRA-CROSSING-P E IP66 22 740

Index: 19.3174.0004.22



Description

Powder painted aluminum cast housing highly weather proof. Luminaire is equipped with adjustable handle designed for mounting on posts and arms of 60 mm diameter. Optional handles are also available for mounting on poles with end diameters from 32 mm to 76 mm. Level of tightness IP66. Diffuser is made of hardened glass. Following color temperatures are available: 4000 K. The luminaire is intended for lighting pedestrian crossings. It is possible to program an autonomous multi-level or manual power reduction for specific customer needs by using a specialized power supply in the luminaire. The luminaires have overvoltage protection as standard based on the functionality of the power supplies. Optionally, the luminaires can be equipped with an additional voltage surge protector that does not require interference during the assembly and disassembly of the power supply system. *Selected luminary variants are available with ENEC certificate.

Product information

Category	Outdoor luminaires
Family	STREETPARK M LED PREMIUM
Name	STREETPARK M LED PREMIUM HE 5000 STREET-ZEBRA-CROSSING-P E IP66 22 740
Index	19.3174.0004.22

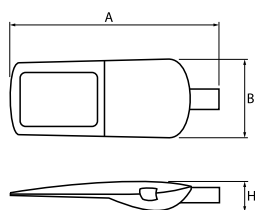


Light and electrical data

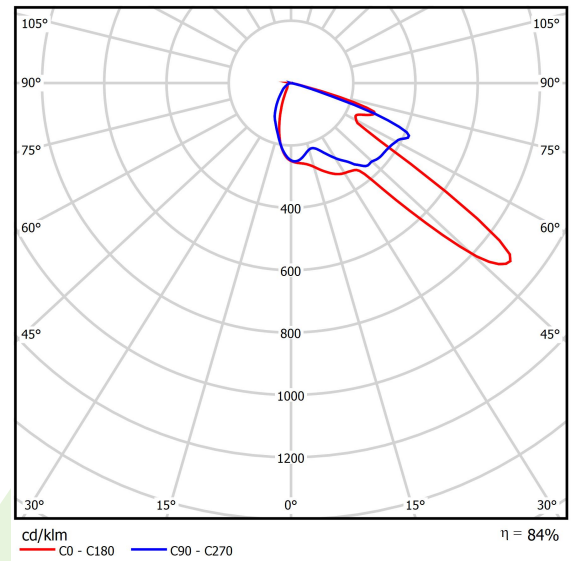
Light source	LED
Luminous flux LED [lm]	4306
LED power [W]	32
Luminaire luminous flux [lm]	3605
Power of luminaire [W]	35
Luminaire's light efficiency [lm/W]	103
Color of the light [K]	4000
CRI	>70
SDCM (LED sources)	5
Beam angle [°]	street light distribution
Protection against electric shock	I
Protection degree	IP66
Voltage	220..240 V, 50..60 Hz
Lifetime of LED sources [h]	100000
Lx/By	L80/B10
Operating temperature range [°C]	-40 ÷ 40
Driver	standard on/off (E)
Power factor cos φ	>0,95
Circuit load capacity	6 (B10), 10 (B16), 10 (C10), 17 (C16)

Mechanical data

Assembly	mounted on poles
Material	aluminum
Color	RAL 9007 (dark gray)
Diffuser	hardened transparent glass
Impact resistant	IK09
Weight [kg]	7
Dimensions [mm]	718 x 311 x 103



A graph of light



Accessories

Index 50ELR76/60

Name REDUKTOR R76/60x100



Index 27LBD-REDUCTION LBD

Name [A] STREETPARK pole reduction
LBD-S05S & LBD-S05M



Index 6BW-M8X40DIN914

Name M8x40 DIN 914 A2 NON-NEW
PRESS-FIT CYLINDER WITH
TAPER END FOR CYLINDER
KEYS



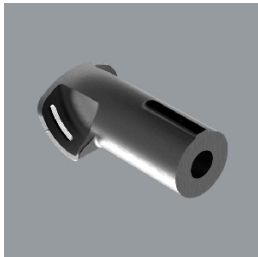
Index 27LBD-Holder Fi76

Name STREETPARK Holder Fi 76 mm,
RAL7021



Index 27LBD-HOLDER FI35

Name STREETPARK Holder Fi 35 mm
(arm Fi32) , RAL7021



Index 19.3100.0001.21

Name Pole Mounting Bracket for
STREETPARK Fi 50



Index 19.3100.0002.21

Name Pole Mounting Bracket for
STREETPARK Fi 60

