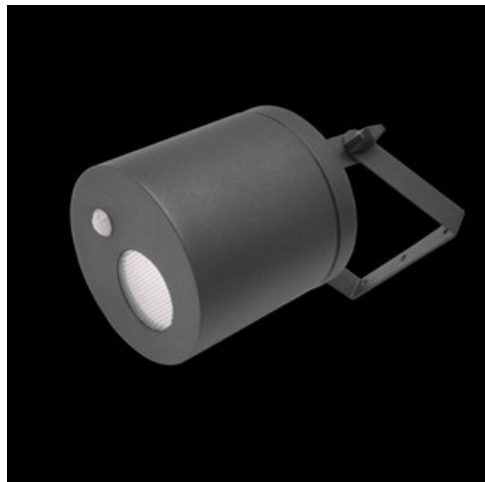


Product: ROLLER LED 1000 FLOOD E PIR IP65 34 830

Index: 19.3172.0003.34



Description

Body of the fitting is made of an aluminum profile and installed on a wall or a ceiling. Assembly on a ceiling is performed using a grip to adjust the fitting in any direction. The fitting is made for locations where it is necessary to provide instantaneous directional lighting, which involves high frequency of switching on the appliance. This type of fitting is particularly recommended for building entrances, garage entries etc. Luminaire equipped with an infrared sensor type PIR (Passive Infra Red). Number of sensor on/off cycles greater than 100000.

Product information

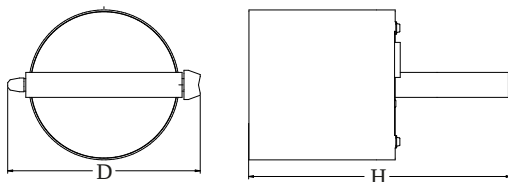
Category	Outdoor luminaires
Family	ROLLER LED
Name	ROLLER LED 1000 FLOOD E PIR IP65 34 830
Index	19.3172.0003.34



Light and electrical data

Light source	LED
Luminous flux LED [lm]	1292
LED power [W]	8,3
Luminaire luminous flux [lm]	983
Power of luminaire [W]	9,8
Luminaire's light efficiency [lm/W]	100,3
Color of the light [K]	3000
CRI	85
SDCM (LED sources)	3
Beam angle [°]	(C0-C180) / (C90-C270) - 95° / 92,8°
Protection against electric shock	I
Protection degree	IP65
Voltage	220..240 V, 50..60 Hz
Lifetime of LED sources [h]	88000 (1) / 100000 (2) / 100000 (3)
Lx/By	L90/B10 (1) / L80/B10 (2) / L70/B10 (3)
Operating temperature range [°C]	-25 ÷ 30
Driver	standard on/off (E)
Power factor cos φ	>0,9
Circuit load capacity	60 (B10), 97 (B16), 101 (C10), 162 (C16)

Mechanical data



Assembly	surface mounted on ceiling or on wall
Material	aluminum
Color	RAL 9016 (white)
Diffuser	opalescent polycarbonate
Impact resistant	IK02
Dimensions [mm]	Ø145 x 260

A graph of light

