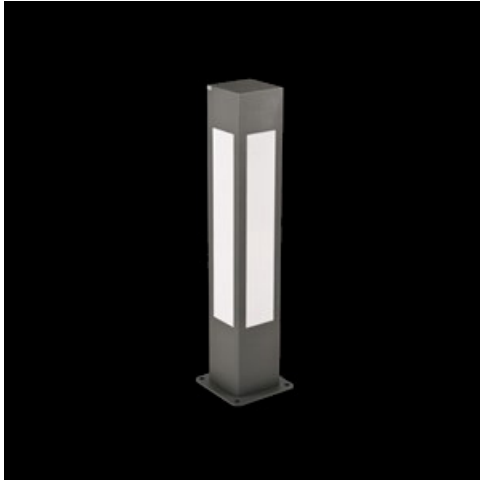


Product: KUBIK POLE SOFT LED 1S 900 3000 E IP65 04 840

Index: 19.3163.0001.04



Description

Outer luminaire to be mounted on a solid surface (concrete, sett, or substructure) equipped with highly efficient energy saving LED sources of the newest generation. Luminaire dedicated to illuminate pedestrians routes such as park alleys, parking site passages, property entrances. Its body made from aluminum which is coated by the facade powder used for outdoor activities. PC opal diffuser. Luminaire is hermetic (IP65) – it guarantees no dust or water penetration. It is also shockproof (IK08).

Product information

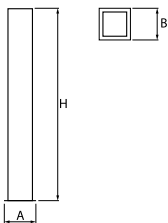
Category	Outdoor luminaires
Family	KUBIK POLE SOFT LED
Name	KUBIK POLE SOFT LED 1S 900 3000 E IP65 04 840
Index	19.3163.0001.04



Light and electrical data

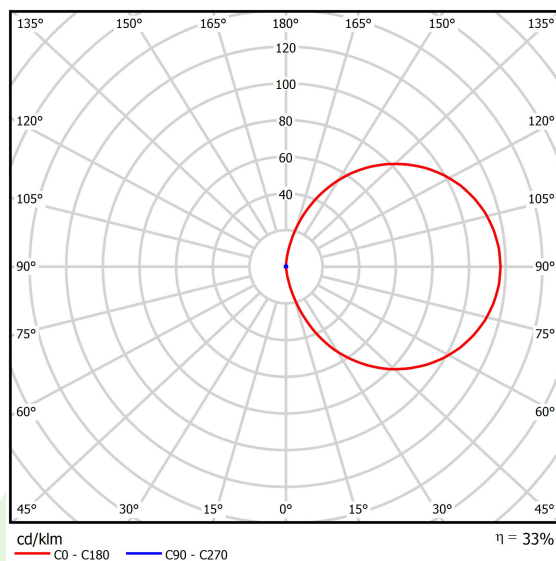
Light source	LED
Luminous flux LED [lm]	4111
LED power [W]	23,3
Luminaire luminous flux [lm]	1376
Power of luminaire [W]	26,4
Luminaire's light efficiency [lm/W]	52,1
Color of the light [K]	4000
CRI	>80
SDCM (LED sources)	2
Beam angle [°]	asymmetric light distribution
Protection against electric shock	I
Protection degree	IP65
Voltage	220..240 V, 50..60 Hz
Lifetime of LED sources [h]	86000 (1) / 100000 (2) / 100000 (3)
Lx/By	L90/B10 (1) / L80/B10 (2) / L70/B10 (3)
Operating temperature range [°C]	-25 ÷ 30
Driver	standard on/off (E)
Power factor cos φ	>0,95
Circuit load capacity	39 (B10), 62 (B16), 65 (C10), 104 (C16)

Mechanical data



Assembly	for the ground
Material	aluminum
Color	RAL 9005 (black)
Diffuser	PC (opalescent polycarbonate)
Impact resistant	IK08
Dimensions [mm]	220 x 220 x 900

A graph of light



Accessories

Index 2TJ5782-3

Name 5782-3 Foundations RAL9007



Index 2TJ5782-4

Name 5782-4 Foundations

