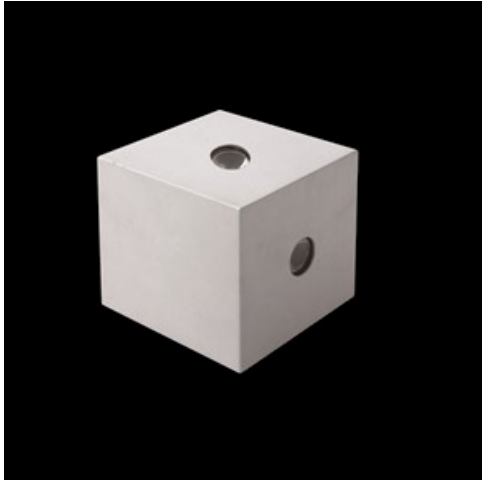


Product: KUBIK LED 3X2,4W 5°-21°/3000K E IP65 21

Index: 19.3153.0024.21



Description

An outdoor fitting made for illuminating building facades and creating lighting effects. The body is made of aluminum painted with special facade paint which is resistant to bad weather conditions. Energy-efficient fitting made of component parts produced by renowned companies. It is possible to use various LED colours at the request of a customer. Ergonomic shapes of the fitting enable the application of the Kubik-type fitting almost in every building. The assembly and accessibility of the internal parts are very easy. The fitting is featured by a high level of protection against the penetration of solids and water: IP65, which renders the fitting an interesting decorative solution highlighting the architecture of an illuminated building.

Product information

Category	Outdoor luminaires
Family	KUBIK LED
Name	KUBIK LED 3X2,4W 5°-21°/3000K E IP65 21
Index	19.3153.0024.21
EAN	5902107043063



Light and electrical data

Light source	LED
Luminous flux LED [lm]	465
LED power [W]	7
Luminaire luminous flux [lm]	438
Power of luminaire [W]	9
Luminaire's light efficiency [lm/W]	48,7
Color of the light [K]	3000
CRI	>80
Beam angle [°]	(C0-C180) / (C90-C270) - 9,6° / 37°
Protection against electric shock	I
Protection degree	IP65
Voltage	220..240 V, 50..60 Hz
Lifetime of LED sources [h]	50000
Lx/By	L70/B50
Operating temperature range [°C]	-25 ÷ 30
Driver	standard on/off (E)
Power factor cos φ	>0,5
Circuit load capacity	40 (B10), 78 (B16), 132 (C10), 158 (C16)

Mechanical data



Assembly	mounted on wall
Material	aluminum
Color	RAL 9006 (grey, metallic, fine structure)
Diffuser	transparent polycarbonate
Impact resistant	IK09
Weight [kg]	0,62
Dimensions [mm]	100 x 100 x 94

A graph of light

