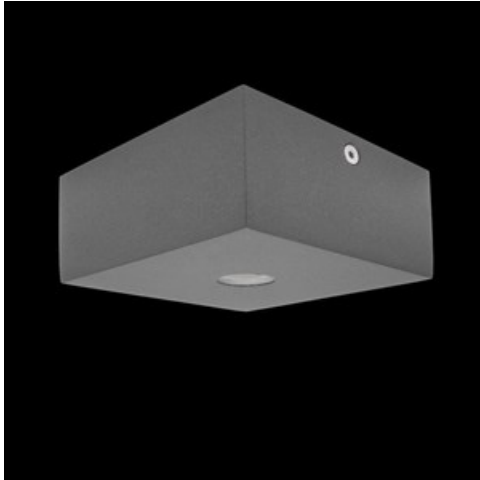


**Product:** KUBIK CEILING SLIM LED 1X1,7W 24°/4000K E IP65 04

**Index:** 19.3151.0001.04



## Description

An outdoor fitting designed for ceiling mounting. The body is made of aluminum. Energy-efficient fitting made of component parts produced by renowned companies. Ergonomic shapes of the fitting enable the application of the Kubik-type fitting almost in every building. The assembly is very easy. Level of protection against penetration of dust and water - IP65. Kubik Ceiling Slim LED luminaire relative to the standard version has a smaller height. Kubik Ceiling Slim LED is more slim, and thus stands out from the ceiling for only 5 cm.

## Product information

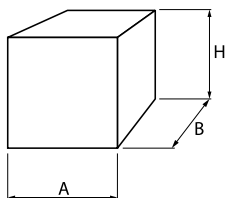
Category	Outdoor luminaires
Family	KUBIK CEILING SLIM LED
Name	KUBIK CEILING SLIM LED 1X1,7W 24°/4000K E IP65 04
Index	19.3151.0001.04



## Light and electrical data

Light source	LED
Luminous flux LED [lm]	152
LED power [W]	2
Luminaire luminous flux [lm]	145
Power of luminaire [W]	3
Luminaire's light efficiency [lm/W]	48,3
Color of the light [K]	4000
CRI	>80
SDCM (LED sources)	5
Beam angle [°]	(C0-C180) / (C90-C270) - 36° / 36°
Protection against electric shock	I
Protection degree	IP65
Voltage	220..240 V, 50..60 Hz
Lifetime of LED sources [h]	50000
Lx/By	L70/B50
Operating temperature range [°C]	-25 ÷ 30
Driver	standard on/off (E)
Power factor cos φ	>0,5
Circuit load capacity	80 (B10), 157 (B16), 265 (C10), 317 (C16)

## Mechanical data



Assembly	surface mounted on ceiling
Material	aluminum
Color	RAL 9005 (black)
Diffuser	transparent polycarbonate
Impact resistant	IK09
Weight [kg]	0,4
Dimensions [mm]	100 x 100 x 50

## A graph of light

