

**Product:** FILAR LED 7500 E 04 840 / L-3000

**Index:** 19.3145.0002.04



## Description

Architect luminaires designed for illuminating public green areas such as: parks, squares or lawns. Other important places of applying post lighting fittings is immediate vicinity of public buildings, office buildings and car parks but also green belts along parade lanes, nearness of garden cafes, open spaces in front of cinemas, theatres, hotels and many other places within a urban area. Base made of aluminium, diffuser tube of acrylic satin. Luminary is equipped with LED panel of high luminous efficacy. The type and dimensions of the foundation each time depend on the foundation conditions. The final selection of the foundation, in accordance with the Building Law, is the responsibility of the designer of the object.

## Product information

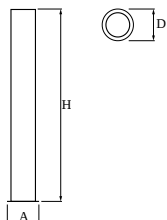
|          |                                  |
|----------|----------------------------------|
| Category | Outdoor luminaires               |
| Family   | FILAR LED                        |
| Name     | FILAR LED 7500 E 04 840 / L-3000 |
| Index    | 19.3145.0002.04                  |
| EAN      | 5901867475008                    |



## Light and electrical data

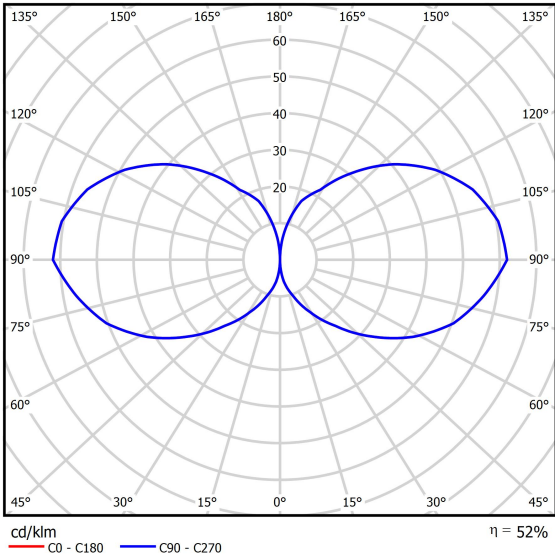
|                                     |  |
|-------------------------------------|--|
| Light source                        | LED                                    |
| Luminous flux LED [lm]              | 7600                                   |
| LED power [W]                       | 76                                     |
| Luminaire luminous flux [lm]        | 3981                                   |
| Power of luminaire [W]              | 85                                     |
| Luminaire's light efficiency [lm/W] | 46,8                                   |
| Color of the light [K]              | 4000                                   |
| CRI                                 | >80                                    |
| SDCM (LED sources)                  | 3                                      |
| Beam angle [°]                      | (C0-C180) / (C90-C270) - 86° / 86,8°   |
| Protection against electric shock   | I                                      |
| Protection degree                   | IP65                                   |
| Voltage                             | 220..240 V, 50..60 Hz                  |
| Lifetime of LED sources [h]         | 36000                                  |
| Lx/By                               | L70/B50                                |
| Operating temperature range [°C]    | -25 ÷ 30                               |
| Driver                              | standard on/off (E)                    |
| Power factor cos φ                  | >0,95                                  |
| Circuit load capacity               | 10 (B10), 16 (B16), 17 (C10), 29 (C16) |

## Mechanical data



|                  |                  |
|------------------|------------------|
| Assembly         | for the ground   |
| Material         | aluminum         |
| Color            | RAL 9005 (black) |
| Diffuser         | acrilsatine      |
| Impact resistant | IK10             |
| Weight [kg]      | 17,25            |
| Dimensions [mm]  | 300 x 300 x 3045 |

A graph of light



Accessories

Index 17ROFU311151

Name B-51 Foundations



Index 50RO4008

Name ROSA set of galvanized nuts for B-60

