

Product: BERYL PROOF WALL LED UP OR DOWN 1000 NARROW E IP65 25 830**Index:** 19.3141.0013.25

Description

Luminaire adapted to be mounted on walls. High lighting efficiency LEDs were used. Its body is made from anodized aluminum profile. It is resistant to solids, dust, and liquids penetration – IP65. This type of luminaire is recommended for decorative or accent illumination of buildings.

Product information

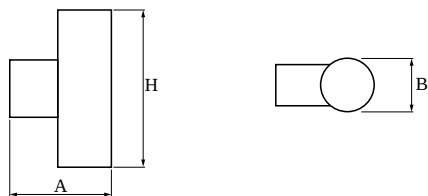
| | |
|----------|---|
| Category | Outdoor luminaires |
| Family | BERYL PROOF WALL LED |
| Name | BERYL PROOF WALL LED UP OR DOWN 1000 NARROW E IP65 25 830 |
| Index | 19.3141.0013.25 |



Light and electrical data

| | |
|---|---|
| Light source | LED |
| Luminous flux LED [lm] | 1307 |
| LED power [W] | 6,2 |
| Luminaire luminous flux [lm] | 1171 |
| Power of luminaire [W] | 8,9 |
| Luminaire's light efficiency [lm/W] | 131,6 |
| Color of the light [K] | 3000 |
| CRI | 85 |
| SDCM (LED sources) | 2 |
| Beam angle [°] | (C0-C180) / (C90-C270) - 44° / 44,2° |
| Photobiological risk class (IEC/EN 62471) | RG1 |
| Protection against electric shock | I |
| Protection degree | IP65 |
| Voltage | 220..240 V, 50..60 Hz |
| Lifetime of LED sources [h] | 88000 (1) / 100000 (2) / 100000 (3) |
| Lx/By | L90/B10 (1) / L80/B10 (2) / L70/B10 (3) |
| Operating temperature range [°C] | -25 ÷ 30 |
| Driver | standard on/off (E) |
| Power factor cos φ | >0,95 |
| Circuit load capacity | 40 (B10), 60 (B16), 64 (C10), 102 (C16) |

Mechanical data



| | |
|------------------|--|
| Assembly | mounted on wall |
| Material | aluminum |
| Color | RAL 7016 (anthracite, metallic, fine structure) |
| Diffuser | transparent polycarbonate |
| Impact resistant | IK06 |
| Dimensions [mm] | 210 x 120 x 370 |

A graph of light

