

Product: LUXWALL DECO LED 4X1,7W ODB-INOX E 4000K

Index: 19.3022.0002.20



Description

Architectural luminaire, wall mounted for decorative or accent lighting of representative interiors, halls or corridors. Eagerly used in such facilities as hotels, palaces, villas or art galleries. The body is made of steel painted white (RAL 9016). Other colors available upon special request. Luminaire reflector made of polished stainless steel (possibility of painting in white). The product is available in two variants due to the light source. It can be equipped with LED sources and an electronic driver or have a G9 base for interchangeable sources of general use that do not require a dedicated driver. In-direct luminaire.

Product information

Category	Architectural luminaires
Family	LUXWALL DECO LED
Name	LUXWALL DECO LED 4X1,7W ODB-INOX E 4000K
Index	19.3022.0002.20

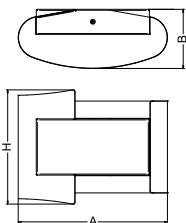


Light and electrical data

Light source	LED
Luminous flux LED [lm]	608
LED power [W]	5
Luminaire luminous flux [lm]	296
Power of luminaire [W]	10
Luminaire's light efficiency [lm/W]	29,6
Color of the light [K]	4000
CRI	>80
SDCM (LED sources)	7
Beam angle [°]	asymmetric light distribution
Protection against electric shock	I
Protection degree	IP40
Voltage	220..240 V, 50..60 Hz
Lifetime of LED sources [h]	50000
Lx/By	L70/B50
Operating temperature range [°C]	5 ÷ 30
Driver	standard on/off (E)
Power factor cos φ	>0,5
Circuit load capacity	40 (B10), 78 (B16), 132 (C10), 158 (C16)

Mechanical data

Assembly	mounted on wall
Material	steel sheet
Color	grey
Diffuser	none
Impact resistant	IK02
Dimensions [mm]	260 x 103 x 220



A graph of light

