

Product: BERYL KN LED UP&DOWN 2x1,7W 5°-21° E IP65 21 830

Index: 19.3013.1002.21



Description

Luminaire adapted to be mounted on walls. High lighting efficiency LEDs were used as light sources. Optical system consists of professional lens that provide light distribution of 5-21° angle. Owing to the optical system solutions, the product is highly effective. Its body is made from anodized aluminum profile. It is resistant to solids, dust, and liquids penetration – IP40 or IP65. This type of luminaire is recommended for decorative or accent illumination, e.g. in restaurants, pubs, or cafes.

Product information

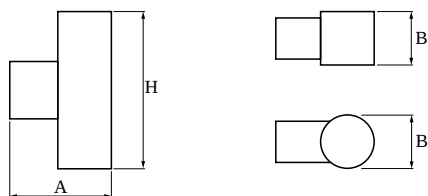
Category	Architectural luminaires
Family	BERYL KN LED UP&DOWN
Name	BERYL KN LED UP&DOWN 2x1,7W 5°-21° E IP65 21 830
Index	19.3013.1002.21



Light and electrical data

Light source	LED
Luminous flux LED [lm]	248
LED power [W]	3
Luminaire luminous flux [lm]	199
Power of luminaire [W]	5
Luminaire's light efficiency [lm/W]	39,8
Color of the light [K]	3000
CRI	>80
SDCM (LED sources)	5
Beam angle [°]	(C0-C180) / (C90-C270) - 36° / 9,6°
Protection against electric shock	I
Protection degree	IP65
Voltage	220..240 V, 50..60 Hz
Lifetime of LED sources [h]	50000
Lx/By	L70/B50
Operating temperature range [°C]	-20 ÷ 30
Driver	standard on/off (E)
Circuit load capacity	80 (B10), 157 (B16), 265 (C10), 317 (C16)

Mechanical data



Assembly	mounted on wall
Material	aluminum
Color	RAL 9006 (gray, metallic, fine structure)
Diffuser	transparent polycarbonate
Impact resistant	IK04
Weight [kg]	0,51
Dimensions [mm]	95 x 45 x 160

A graph of light

