

**Product:** EUROPANEL LED CRI95 5800 PLX E 34 IP65 940

**Index:** 19.3054.0153.34



## Description

Modern LED panel for installation in suspended ceilings or directly on the ceiling. Equipped with the highly efficient LED sources. Luminaire body made from aluminum. PMMA opal diffuser. Colour of luminary - white. Luminaire dedicated for the public use structure like offices, conference rooms, classrooms, lecture halls etc. The level of protection against solid substances, dust and moisture penetration is IP65.

## Product information

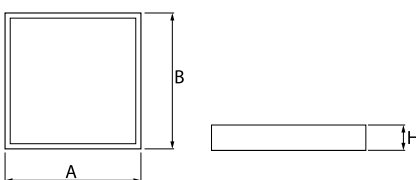
|          |  |
|----------|--|
| Category | Recessed luminaires                        |
| Family   | EUROPANEL LED CRI95 IP65                   |
| Name     | EUROPANEL LED CRI95 5800 PLX E 34 IP65 940 |
| Index    | 19.3054.0153.34                            |



## Light and electrical data

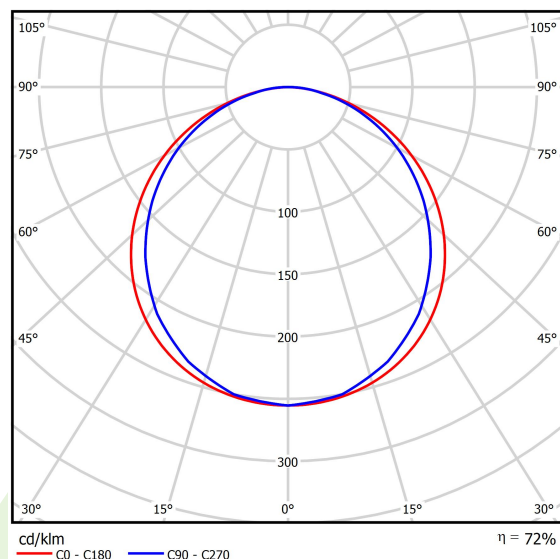
|   |  |
|---|--|
| Light source                              | LED                                      |
| Luminous flux LED [lm]                    | 4708,2                                   |
| LED power [W]                             | 30                                       |
| Luminaire luminous flux [lm]              | 3409                                     |
| Power of luminaire [W]                    | 33,6                                     |
| Luminaire's light efficiency [lm/W]       | 101,5                                    |
| Color of the light [K]                    | 4000                                     |
| CRI                                       | >95                                      |
| Beam angle [°]                            | (C0-C180) / (C90-C270) - 115,4° / 107,6° |
| Photobiological risk class (IEC/EN 62471) | RG0                                      |
| Protection against electric shock         | II                                       |
| Protection degree                         | IP65                                     |
| Voltage                                   | 220..240 V, 50..60 Hz                    |
| Lifetime of LED sources [h]               | 100000 (1) / 80000 (2)                   |
| Lx/By                                     | L70/B10 (1) / L80/B10 (2)                |
| Operating temperature range [°C]          | 5 ÷ 30                                   |
| Driver                                    | standard on/off (E)                      |
| Power factor cos φ                        | 0,9                                      |
| Circuit load capacity                     | 20 (B10), 30 (B16), 33 (C10), 53 (C16)   |

## Mechanical data



|                  |  |
|------------------|--|
| Assembly         | mounted in module ceilings, plasterboard ceilings (using accessories) or surface mounted (using accessories) |
| Material         | aluminum   |
| Color            | RAL 9016 (white)   |
| Diffuser         | PLX (PMMA opal)  |
| Impact resistant | IK04   |
| Weight [kg]      | 3,61   |
| Dimensions [mm]  | 596 x 596 x 36   |

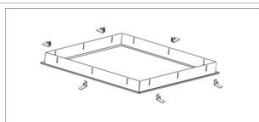
## A graph of light



## Accessories

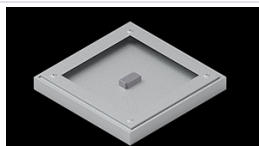
Index 2C1A7392-34R

Name EUROPANEL / BACKPANEL / RIM  
COMPACT LED RECESSED  
ACCESSORIES 34 / 600X600



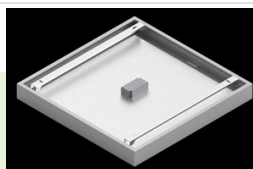
Index 19.3213.0073.34

Name BACKPANEL LED SURFACE  
ACCESSORIES 34 / 600X600



Index 19.3213.0082.34

Name BACKPANEL LED SURFACE  
ACCESSORIES COMPACT 34 /  
600X600



Index 19.3213.0083.34

Name BACKPANEL LED SURFACE  
ACCESSORIES BASIC 34 /  
600X600x70mm

