

Product: EUROPANEL LED CRI95 4800 PLX E 34 IP65 940

Index: 19.3054.0148.34



Description

Modern LED panel for installation in suspended ceilings or directly on the ceiling. Equipped with the highly efficient LED sources. Luminaire body made from aluminum. PMMA opal diffuser. Colour of luminary - white. Luminary dedicated for the public use structure like offices, conference rooms, classrooms, lecture halls etc. The level of protection against solid substances, dust and moisture penetration is IP65.

Product information

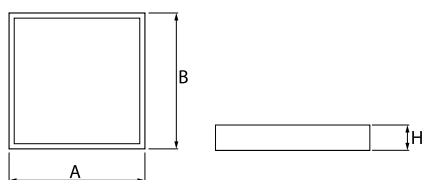
Category	Recessed luminaires
Family	EUROPANEL LED CRI95 IP65
Name	EUROPANEL LED CRI95 4800 PLX E 34 IP65 940
Index	19.3054.0148.34



Light and electrical data

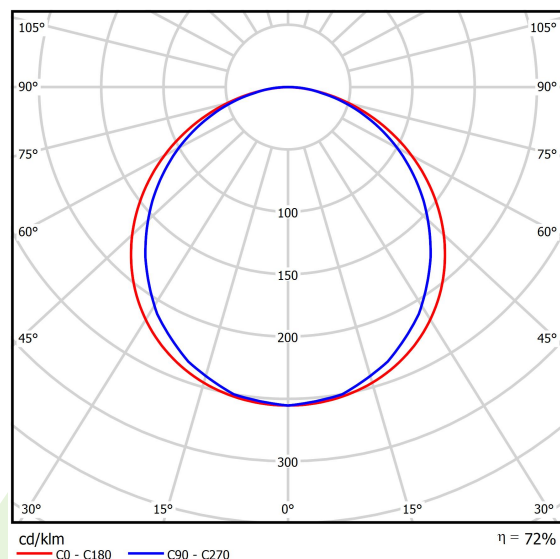
Light source	LED
Luminous flux LED [lm]	4053,3
LED power [W]	25,5
Luminaire luminous flux [lm]	2935
Power of luminaire [W]	28,6
Luminaire's light efficiency [lm/W]	102,6
Color of the light [K]	4000
CRI	>95
Beam angle [°]	(C0-C180) / (C90-C270) - 115,4° / 107,6°
Photobiological risk class (IEC/EN 62471)	RG0
Protection against electric shock	II
Protection degree	IP65
Voltage	220..240 V, 50..60 Hz
Lifetime of LED sources [h]	100000 (1) / 80000 (2)
Lx/By	L70/B10 (1) / L80/B10 (2)
Operating temperature range [°C]	5 ÷ 30
Driver	standard on/off (E)
Power factor cos φ	0,9
Circuit load capacity	20 (B10), 30 (B16), 33 (C10), 53 (C16)

Mechanical data



Assembly	mounted in module ceilings, plasterboard ceilings (using accessories) or surface mounted (using accessories)
Material	aluminum
Color	RAL 9016 (white)
Diffuser	PLX (PMMA opal)
Impact resistant	IK04
Dimensions [mm]	596 x 596 x 36

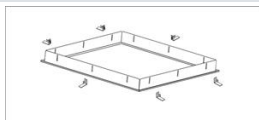
A graph of light



Accessories

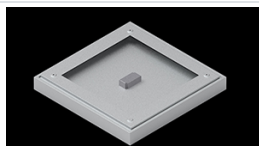
Index 2C1A7392-34R

Name EUROPANEL / BACKPANEL / RIM
COMPACT LED RECESSED
ACCESSORIES 34 / 600X600



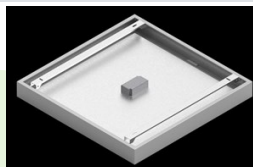
Index 19.3213.0073.34

Name BACKPANEL LED SURFACE
ACCESSORIES 34 / 600X600



Index 19.3213.0082.34

Name BACKPANEL LED SURFACE
ACCESSORIES COMPACT 34 /
600X600



Index 19.3213.0083.34

Name BACKPANEL LED SURFACE
ACCESSORIES BASIC 34 /
600X600x70mm

