

Product: EUROPANEL LED 4800 MICRO-PRM EDD 34 IP65 840

Index: 19.3054.0113.34



Description

Modern LED panel for installation in suspended ceilings or directly on the ceiling. Equipped with the highly efficient LED sources. Luminaire body made from aluminum. PMMA opal diffuser. Colour of luminary - white. Luminaire dedicated for the public use structure like offices, conference rooms, classrooms, lecture halls etc. The level of protection against solid substances, dust and moisture penetration is IP65.

Product information

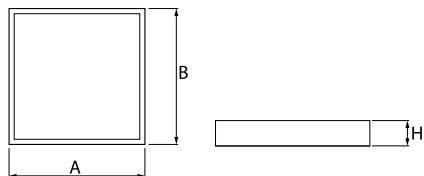
| | |
|----------|-----------------------------------------------------|
| Category | Recessed luminaires |
| Family | EUROPANEL LED IP65 |
| Name | EUROPANEL LED 4800 MICRO-PRM EDD 34 IP65 840 |
| Index | 19.3054.0113.34 |



Light and electrical data

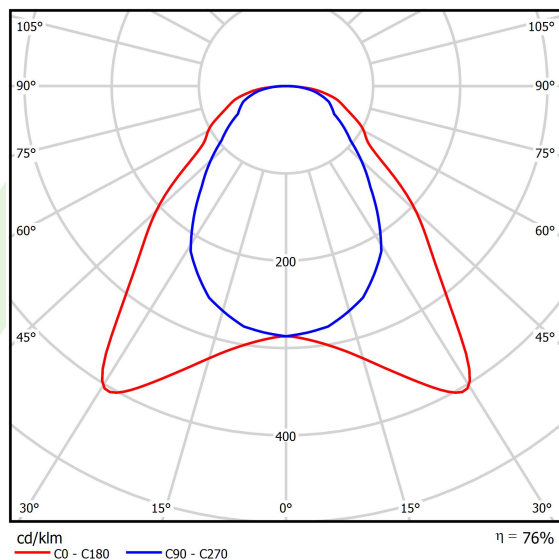
| | |
|-------------------------------------------|-----------------------------------------------|
| Light source | LED |
| Luminous flux LED [lm] | 4582 |
| LED power [W] | 26 |
| Luminaire luminous flux [lm] | 3469 |
| Power of luminaire [W] | 29,3 |
| Luminaire's light efficiency [lm/W] | 118,4 |
| Color of the light [K] | 4000 |
| CRI | >80 |
| SDCM (LED sources) | 3 |
| Beam angle [°] | (C0-C180) / (C90-C270) - 93° / 82,6° |
| Photobiological risk class (IEC/EN 62471) | RG0 |
| Protection against electric shock | II |
| Protection degree | IP65 |
| Voltage | 220..240 V, 50..60 Hz |
| Lifetime of LED sources [h] | 100000 (1) / 80000 (2) |
| Lx/By | L70/B10 (1) / L80/B10 (2) |
| Operating temperature range [°C] | 5 ÷ 30 |
| Driver | DIM DALI (EDD) |
| Power factor cos φ | >0,95 |
| Circuit load capacity | 20 (B10), 30 (B16), 32 (C10), 52 (C16) |

Mechanical data



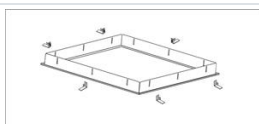
| | |
|------------------|--------------------------------------------------------------------------------------------------------------|
| Assembly | mounted in module ceilings, plasterboard ceilings (using accessories) or surface mounted (using accessories) |
| Material | aluminum |
| Color | RAL 9016 (white) |
| Diffuser | Micro-PRM (micro-prismatic diffuser PMMA) |
| Impact resistant | IK04 |
| Dimensions [mm] | 596 x 596 x 36 |

A graph of light

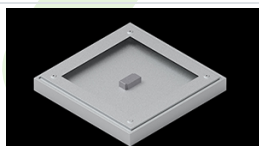


Accessories

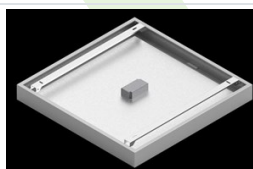
Index 2C1A7392-34R
Name EUROPANEL / BACKPANEL / RIM
COMPACT LED RECESSED
ACCESSORIES 34 / 600X600



Index 19.3213.0073.34
Name BACKPANEL LED SURFACE
ACCESSORIES 34 / 600X600



Index 19.3213.0082.34
Name BACKPANEL LED SURFACE
ACCESSORIES COMPACT 34 /
600X600



Index 19.3213.0083.34
Name BACKPANEL LED SURFACE
ACCESSORIES BASIC 34 /
600X600X70

