

Product: X-LINE PRO 3000 LOUVER E 34 830 LINE / L-840MM

Index: 19.2110.3231.34



Description

Light fitting made out of aluminium profile. Simple luminaire construction (no mounting plates or LED plates). LEDs in the standard version are mounted by inserting them into the slot in the middle of the profile. Direct (down) light distribution. Available optical systems: anti-glare louvre (silver, white or black on request). The luminaire is available in a line version. Available colors: anodized aluminum, black RAL 9005, white RAL 9016 or any color from the RAL palette on request. Gray, white or black polycarbonate end caps. Plastic plate (HIPS) masking the electronics compartment (only in luminaires with direct distribution). Possibility to use an aluminum snap-on aluminum cover. The use of luminaires typically for offices.

Product information

| | |
|----------|--|
| Category | Surface mounted luminaires |
| Family | X-LINE PRO LINE |
| Name | X-LINE PRO 3000 LOUVER E 34 830 LINE / L-840MM |
| Index | 19.2110.3231.34 |



Light and electrical data

| | |
|---|--|
| Light source | LED |
| Luminous flux LED [lm] | 3159 |
| LED power [W] | 16,8 |
| Luminaire luminous flux [lm] | 3067,4 |
| Power of luminaire [W] | 19,1 |
| Luminaire's light efficiency [lm/W] | 160,6 |
| Color of the light [K] | 3000 |
| CRI | >80 |
| SDCM (LED sources) | 3 |
| Beam angle [°] | (C0-C180) / (C90-C270) - 82,4° / 76,2° |
| Photobiological risk class (IEC/EN 62471) | RG0 |
| Protection against electric shock | I |
| Protection degree | IP40 |
| Voltage | 220..240 V, 50..60 Hz |
| Lifetime of LED sources [h] | 100000 |
| Lx/By | L80/B10 |
| Operating temperature range [°C] | 5 ÷ 35 |
| Driver | standard on/off (E) |
| Power factor cos φ | >0,95 |
| Circuit load capacity | 22 (B10), 35 (B16), 36 (C10), 59 (C16) |

Mechanical data



| | |
|------------------|---|
| Assembly | directly mounted to ceiling construction or surface mounted on slings using accessories |
| Material | aluminum |
| Color | RAL 9016 (white) |
| Diffuser | LOUVER (anti-glare louver) |
| Impact resistant | IK04 |
| Dimensions [mm] | 840 x 60 x 70 |

A graph of light



Accessories

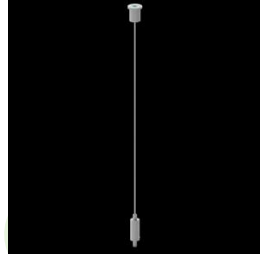
Index 19.3272.0301.34

Name SUSPENSION NEW TYPE-A 34
LENGHT 1,5M WIRE 3X 1-POINT



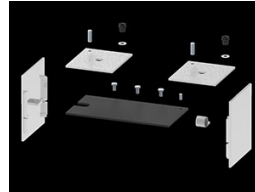
Index 19.3272.1205.00

Name SUSPENSION NEW TYPE-E
LENGHT-1,5 METER WITHOUT
WIRE 1-POINT



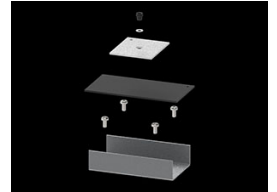
Index 19.2110.0001.34

Name X-LINE PRO LOUVER LINE
FRONT+END SET 34



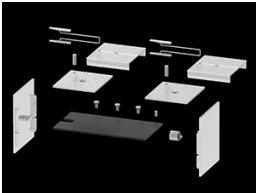
Index 19.2110.0002.34

Name X-LINE PRO LOUVER LINE
MIDDLE SET 34



Index 19.2110.0003.34

Name X-LINE PRO LOUVER LINE
SURFACE FRONT+END SET 34



Index 19.2110.0004.34

Name X-LINE PRO LOUVER LINE
SURFACE MIDDLE SET 34

