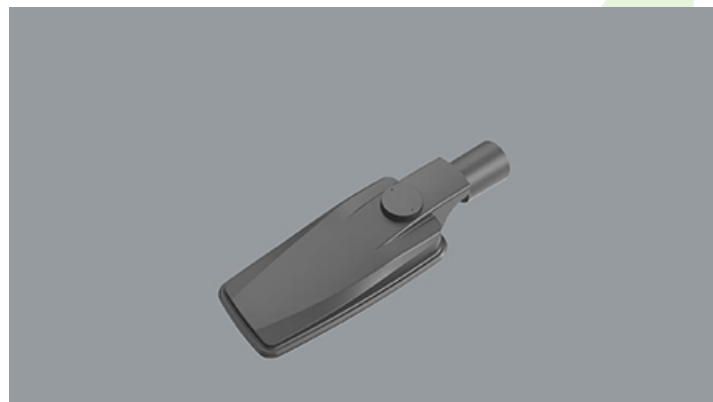




## STREETPARK SMALL V2 LED PREMIUM

### Outdoor luminaires



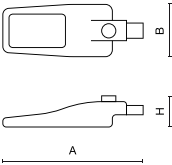
Streetpark LED Mini/Small combines elegance and efficiency, offering optimal lighting for urban streets, roads, and public spaces. With up to 182 (Mini), 187 (Small) lm/W efficiency, and a lumen output of up to 7523 lm (Mini) and 17287 lm (Small), it ensures excellent visibility while reducing energy consumption. Built to withstand harsh outdoor conditions, it's perfect for a wide range of applications, from main roads to squares. The diameter of the mounting bracket is 60 mm.



Main parameters:

Name	Luminous flux LED [lm]	Power of luminaire [W]	Color [K]	Dimensions A x B x H [mm]
STREETPARK SMALL V2 LED PREMIUM 2800	2827,4	14,2	4000	610 x 205 x 85
STREETPARK SMALL V2 LED PREMIUM 3700	3740,8	19,1	4000	610 x 205 x 85
STREETPARK SMALL V2 LED PREMIUM 4500	4637,8	24,1	4000	610 x 205 x 85
STREETPARK SMALL V2 LED PREMIUM 5300	5517,2	29,3	4000	610 x 205 x 85
STREETPARK SMALL V2 LED PREMIUM 5600	5654	28,3	4000	610 x 205 x 85
STREETPARK SMALL V2 LED PREMIUM 6100	6377,8	34,5	4000	610 x 205 x 85
STREETPARK SMALL V2 LED PREMIUM 6900	7218,4	39,8	4000	610 x 205 x 85
STREETPARK SMALL V2 LED PREMIUM 7400	7482	38,2	4000	610 x 205 x 85
STREETPARK SMALL V2 LED PREMIUM 7700	8037,8	45,3	4000	610 x 205 x 85
STREETPARK SMALL V2 LED PREMIUM 8700	9224,7	53,7	4000	610 x 205 x 85
STREETPARK SMALL V2 LED PREMIUM 9000	9276	48,3	4000	610 x 205 x 85
STREETPARK SMALL V2 LED PREMIUM 10600	11034	58,6	4000	610 x 205 x 85
STREETPARK SMALL V2 LED PREMIUM 12200	12756	68,9	4000	610 x 205 x 85
STREETPARK SMALL V2 LED PREMIUM 13800	14436	79,7	4000	610 x 205 x 85
STREETPARK SMALL V2 LED PREMIUM 15400	16076	90,7	4000	610 x 205 x 85
STREETPARK SMALL V2 LED PREMIUM 17400	18450	107,3	4000	610 x 205 x 85

Technical drawing:



Light and electrical features:

Light source	LED
Voltage	220..240 V, 50..60 Hz
Lifetime of LED sources [h]	108000
Lx/By	L95/B10
CRI	>70
SDCM (LED sources)	3
Photobiological risk class (IEC/EN 62471)	RG0
Operating temperature range [°C]	-40 ÷ 50
Driver	standard on/off (E)

Mechanical features:

Assembly	mounted on poles
Material	aluminum
Color	RAL 7035 (light grey)
Diffuser	PMMA lenses and hardened transparent glass



Note: The power shown refers to the whole system (tolerance +/- 10%).  
The given luminous flux refers to LED light sources (tolerance +/- 10% depends on the value of the colour temperature).  
Technical data may be changed. Photos of the luminaires may differ from reality.  
Date of last update: 22-08-2025