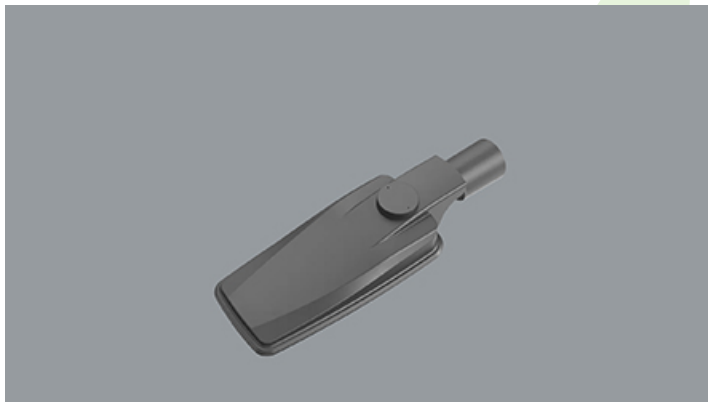




## STREETPARK MINI V2 LED PREMIUM

Outdoor luminaires



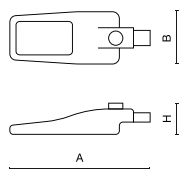
Streetpark LED Mini/Small combines elegance and efficiency, offering optimal lighting for urban streets, roads, and public spaces. With up to 182 (Mini), 187 (Small) lm/W efficiency, and a lumen output of up to 7523 lm (Mini) and 17287 lm (Small), it ensures excellent visibility while reducing energy consumption. Built to withstand harsh outdoor conditions, it's perfect for a wide range of applications, from main roads to squares.



## Main parameters:

Name	Luminous flux LED [lm]	Power of luminaire [W]	Color [K]	Dimensions A x B x H [mm]
STREETPARK MINI V2 LED PREMIUM 2100	2120,5	10,6	4000	513 x 180 x 85
STREETPARK MINI V2 LED PREMIUM 2700	2805,6	14,4	4000	513 x 180 x 85
STREETPARK MINI V2 LED PREMIUM 3400	3478,4	18,1	4000	513 x 180 x 85
STREETPARK MINI V2 LED PREMIUM 4000	4137,9	22	4000	513 x 180 x 85
STREETPARK MINI V2 LED PREMIUM 4200	4242	21,3	4000	513 x 180 x 85
STREETPARK MINI V2 LED PREMIUM 4600	4783,3	25,9	4000	513 x 180 x 85
STREETPARK MINI V2 LED PREMIUM 5200	5413,8	30	4000	513 x 180 x 85
STREETPARK MINI V2 LED PREMIUM 5400	5612	28,8	4000	513 x 180 x 85
STREETPARK MINI V2 LED PREMIUM 5700	6028,4	34,1	4000	513 x 180 x 85
STREETPARK MINI V2 LED PREMIUM 6500	6918,5	40,4	4000	513 x 180 x 85
STREETPARK MINI V2 LED PREMIUM 6800	6956	36,2	4000	513 x 180 x 85
STREETPARK MINI V2 LED PREMIUM 8000	8276	43,9	4000	513 x 180 x 85
STREETPARK MINI V2 LED PREMIUM 9200	9566	43,9	4000	513 x 180 x 85

## Technical drawing:



**Light and electrical features:**

<b>Light source</b>	LED
<b>Voltage</b>	220..240 V, 50..60 Hz
<b>Lifetime of LED sources [h]</b>	108000
<b>Lx/By</b>	L95/B10
<b>CRI</b>	>70
<b>SDCM (LED sources)</b>	3
<b>Photobiological risk class (IEC/EN 62471)</b>	RG0
<b>Operating temperature range [°C]</b>	-40 ÷ 50
<b>Driver</b>	standard on/off (E)

**Mechanical features:**

<b>Assembly</b>	mounted on poles
<b>Material</b>	aluminum
<b>Color</b>	RAL 7035 (light grey)
<b>Diffuser</b>	PMMA lenses and hardened transparent glass



Note: The power shown refers to the whole system (tolerance +/- 10%).  
 The given luminous flux refers to LED light sources (tolerance +/- 10% depends on the value of the colour temperature).  
 Technical data may be changed. Photos of the luminaires may differ from reality.  
 Date of last update: 24-03-2025