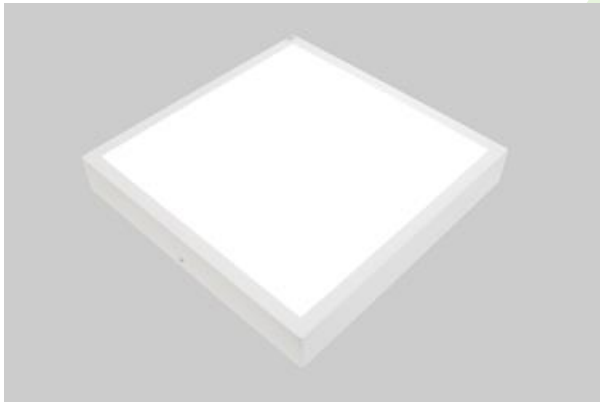
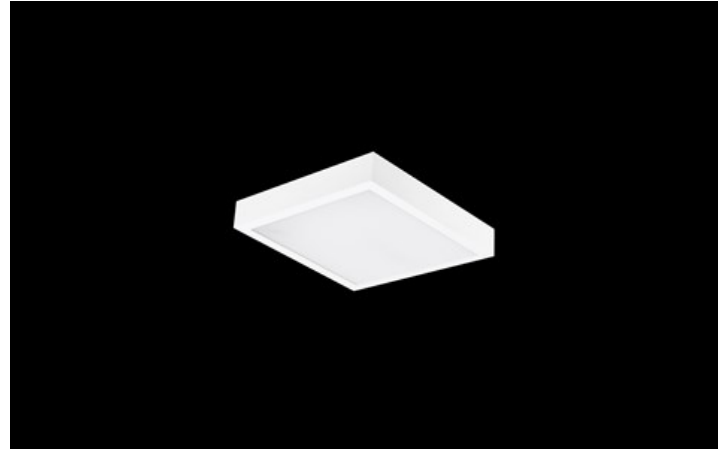


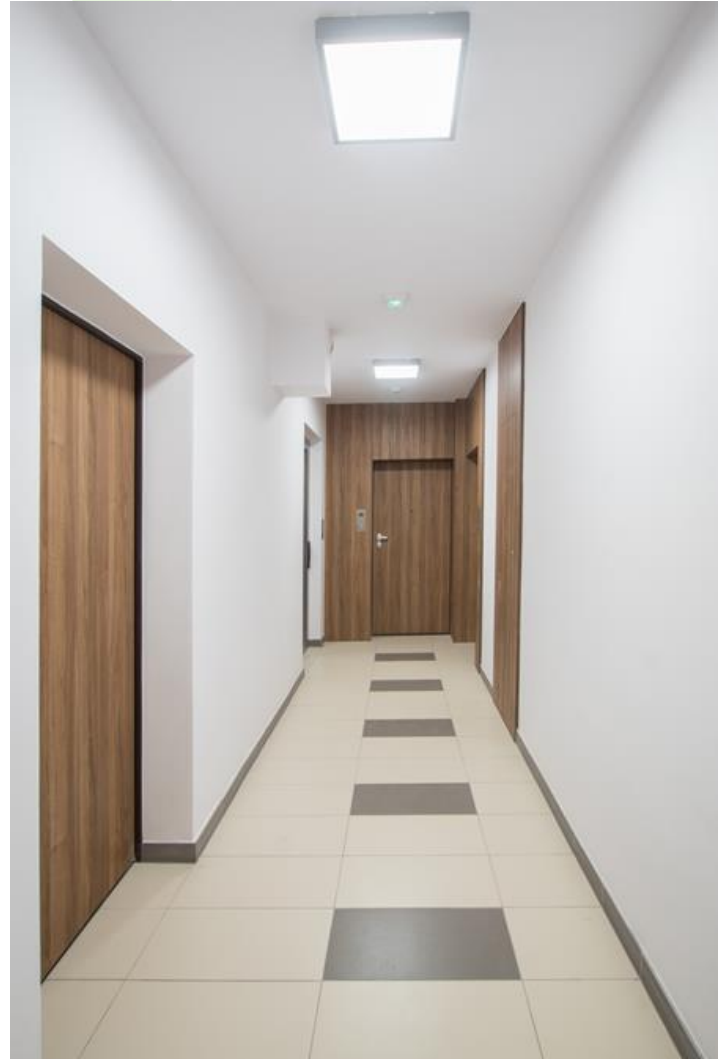


RUBIN LOOK LED SMOOTH COMPACT UGR<19

UGR<19 luminaires



Surface mounted luminaire for LED sources. Luminaire body made from steel sheet, powder coated. Luminaire recommended for: wards and hospital bathrooms.



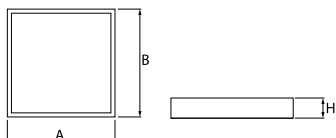
"Grójecka 216" apartments, Warsaw



Main parameters:

Name	Luminous flux LED [lm]	Power of luminaire [W]	Color [K]	Dimensions A x B x H [mm]
RUBIN LOOK LED SMOOTH COMPACT 2500	2245 / 2377	14,2	3000 / 4000	365 x 365 x 50

Technical drawing:



Light and electrical features:

Light source	LED
Voltage	220..240 V, 50..60 Hz
Lifetime of LED sources [h]	100000 (1) / 80000 (2)
Lx/By	L70/B10 (1) / L80/B10 (2)
CRI	>80
SDCM (LED sources)	5
Photobiological risk class (IEC/EN 62471)	RG0
Operating temperature range [°C]	5 ÷ 30
Driver	standard on/off (E)
Power factor cos φ	>0,95

* Variant to specify when ordering

Mechanical features:

Assembly	surface mounted on ceiling
Material	steel sheet
Color	RAL 9006 (gray, metallic, fine structure) RAL 9016 (white) *
Diffuser	Micro-PRM (micro-prismatic diffuser PMMA)

Note: The power shown refers to the whole system (tolerance +/- 10%).
The given luminous flux refers to LED light sources (tolerance +/- 10% depends on the value of the colour temperature).
Technical data may be changed. Photos of the luminaires may differ from reality.
Date of last update: 24-03-2025