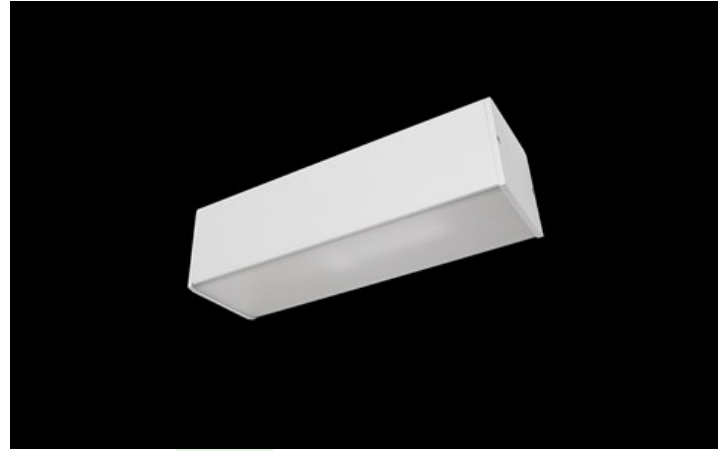




ONLINE E27

Surface mounted luminaires



Luminaire for interchangeable light sources so called Retrofit suitable for E27 frame. The body is made of aluminum. PMMA milky colour diffuser. Very easy mounting and access to the interior of the luminaire. Wall mounting (Online Kinkiet) or ceiling mounting (Online Surface).



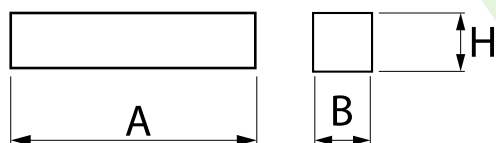
"Awangarda" house, Warsaw



Main parameters:

Name	Luminous flux LED [lm]	Power of luminaire [W]	Color [K]	Dimensions A x B x H [mm]
ONLINE WALL	depending on applied light source	depending on applied light source	depending on applied light source	300 x 92 x 87
ONLINE N	depending on applied light source	depending on applied light source	depending on applied light source	300 x 92 x 87

Technical drawing:



Light and electrical features:

Light source	RETROFIT E27 (not included)
Voltage	220..240 V, 50..60 Hz
Lifetime of LED sources [h]	depending on applied light source
Lx/By	depending on applied light source
CRI	depending on applied light source
SDCM (LED sources)	depending on applied light source
Operating temperature range [°C]	
Driver	none

Mechanical features:

Assembly	mounted on wall surface mounted on ceiling
Material	aluminum
Color	RAL 9016 (white)
Diffuser	PMMA opal

Note: The power shown refers to the whole system (tolerance +/- 10%).
The given luminous flux refers to LED light sources (tolerance +/- 10% depends on the value of the colour temperature).
Technical data may be changed. Photos of the luminaires may differ from reality.
Date of last update: 13-12-2024