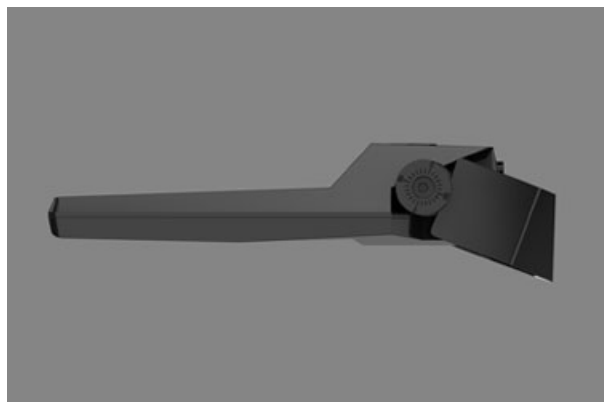
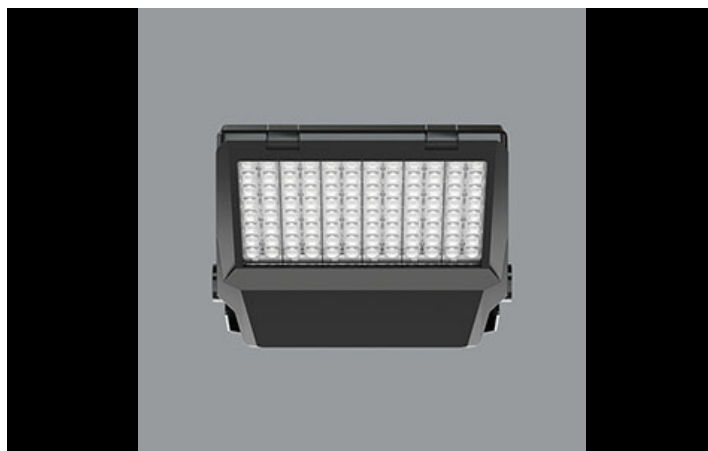




NUMANCIA M PRO LED

Outdoor luminaires



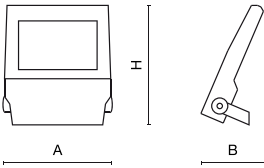
Technical floodlight for big spaces. Can be used as indoor or outdoor luminaire at high heights where top light distribution control is required. Ideal for outdoor industrial areas, loading bays, car parks, recreational sports facilities and outdoor open areas. Designed for wall surface mounted, with specific stirrup construction that eases installation. Luminaire body built in die-cast aluminium with protective hardened glass and finish in RAL 9023 (dark grey). Tool-free and fast access to inner parts. Luminaire has a high environment protection of IP65 and IK09 impact resistant, is also provided with inner pressure balancing system. Luminaire adds in an PMMA lens system and multiple optical distributions. Luminaire built-in an Electronic Control Gear.



Main parameters:

Name	Luminous flux LED [lm]	Power of luminaire [W]	Color [K]	Dimensions A x B x H [mm]
NUMANCIA M PRO LED 26000	26254,5	147,8	4000	395 x 93 x 473
NUMANCIA M PRO LED 35000	34694,6	190,2	4000	395 x 93 x 473

Technical drawing:



Light and electrical features:

Light source	LED
Voltage	220..240 V, 50..60 Hz
Lifetime of LED sources [h]	100000
Lx/By	L80/B10
CRI	>70
SDCM (LED sources)	3
Photobiological risk class (IEC/EN 62471)	RG0
Operating temperature range [°C]	-40 ÷ 35
Driver	standard on/off (E)
Power factor cos φ	>0,95

Mechanical features:

Assembly	mounted on wall
Material	aluminum
Color	RAL 9023 (dark grey)
Diffuser	SH (transparent hardened glass)

Note: The power shown refers to the whole system (tolerance +/- 10%).
The given luminous flux refers to LED light sources (tolerance +/- 10% depends on the value of the colour temperature).
Technical data may be changed. Photos of the luminaires may differ from reality.
Date of last update: 22-08-2025