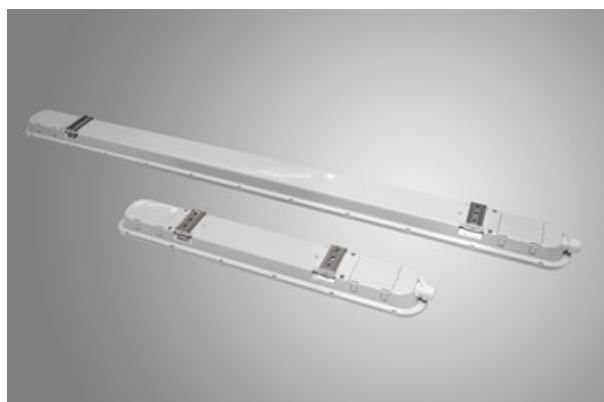




NEPTUN LED V2

Industrial luminaires



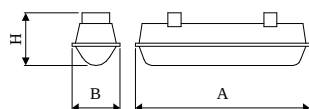
Tightly-closed ceiling luminaires with highly efficient LED light sources, ensuring additional protection against solid body penetration and jet of water from all directions. Perfect to be installed in moist and dusty rooms. The luminaire is characterized by compact size and unbelievably simple and quick way to install comparing with similar products. The color temperature for applied LED light sources is 3000/4000 K. Color rendering index $Ra > 80$. The luminaire is dedicated for halls, warehouses, underground passes, car parks illumination etc. Looping through power supply 16 A.



Main parameters:

Name	Luminous flux LED [lm]	Power of luminaire [W]	Color [K]	Dimensions A x B x H [mm]
NEPTUN LED V2 1300	1280,3 / 1353,2	7,3	3000 / 4000	600 x 72 x 58
NEPTUN LED V2 2200	2196 / 2321	12,1	3000 / 4000	600 x 72 x 58
NEPTUN LED V2 4400	4219 / 4392 / 4641,9 / 4700 / 4985,2 / 5268,3	24,2 / 24 / 27,8	3000 / 4000	600 x 92 x 60 / 1200 x 72 x 58
NEPTUN LED V2 4400 HT50	4985,2 / 5268,3	27,8	3000 / 4000	1200 x 72 x 58
NEPTUN LED V2 5200	6143,2 / 6492	35	3000 / 4000	1200 x 72 x 58
NEPTUN LED V2 5200 HT50	6143,2 / 6492	35	3000 / 4000	1200 x 72 x 58
NEPTUN LED V2 5500	6231,5 / 6585,4	34,8	3000 / 4000	1500 x 72 x 58
NEPTUN LED V2 5500 HT50	6231,5 / 6585,4	34,8	3000 / 4000	1500 x 72 x 58
NEPTUN LED V2 7500	7581 / 7950 / 7971 / 8402	42,2 / 42 / 42,9	3000 / 4000	1500 x 92 x 60
NEPTUN LED V2 7500 HT50	7950 / 7971 / 8402	42,9 / 42,2	3000 / 4000	1500 x 92 x 60
NEPTUN LED V2 8800	8784 / 9284	48,4	3000 / 4000	1200 x 92 x 60
NEPTUN LED V2 8800 HT50	8784 / 9284	48,4	3000 / 4000	1200 x 92 x 60
NEPTUN LED V2 10000	9970,3 / 10536,6	55,6	3000 / 4000	1200 x 92 x 60
NEPTUN LED V2 11000	10980 / 11604	60,7	3000 / 4000	1500 x 92 x 60
NEPTUN LED V2 11000 HT50	10980 / 11604	60,7	3000 / 4000	1500 x 92 x 60
NEPTUN LED V2 16000	15962,7 / 16576	99,1	3000 / 4000	1200 x 92 x 60

Technical drawing:



Light and electrical features:

Light source	LED
Voltage	220..240 V, 50..60 Hz
Lifetime of LED sources [h]	100000
Lx/By	L80/B10
CRI	>80
SDCM (LED sources)	3
Photobiological risk class (IEC/EN 62471)	RG0
Operating temperature range [°C]	-20 ÷ 40/-25 ÷ 40/-40 ÷ 50/-25 ÷ 30
Driver	standard on/off (E) DIM DALI (EDD) *
Power factor cos φ	>0,95

* Variant to specify when ordering

Mechanical features:

Assembly	directly mounted to ceiling construction or surface mounted on slings
Material	polycarbonate
Color	RAL 9006 (grey)
Diffuser	PC-FROZEN (frozen polycarbonate) PC (opalescent polycarbonate)

Additional information:

Possibility of using looping through power supply 16 A. The luminaire can be made in CLO version.

Note: The power shown refers to the whole system (tolerance +/- 10%).
The given luminous flux refers to LED light sources (tolerance +/- 10% depends on the value of the colour temperature).
Technical data may be changed. Photos of the luminaires may differ from reality.
Date of last update: 13-12-2024