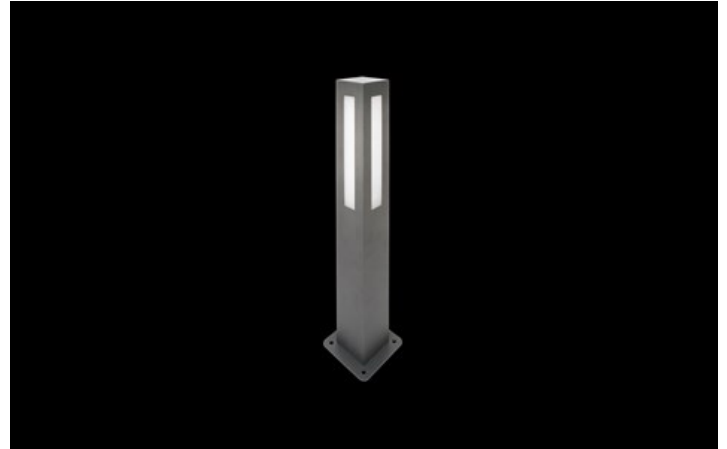
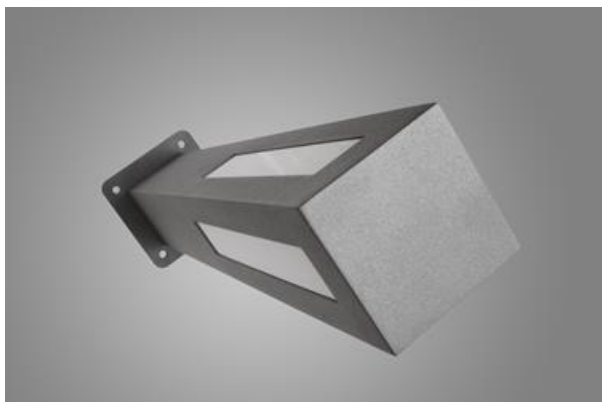
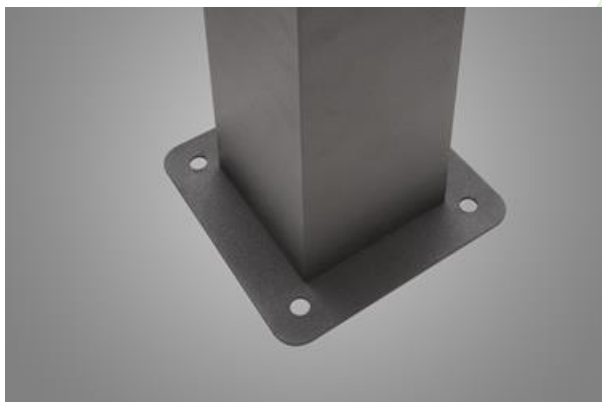
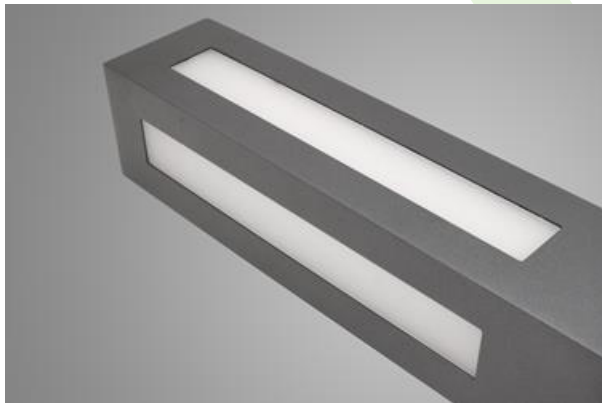


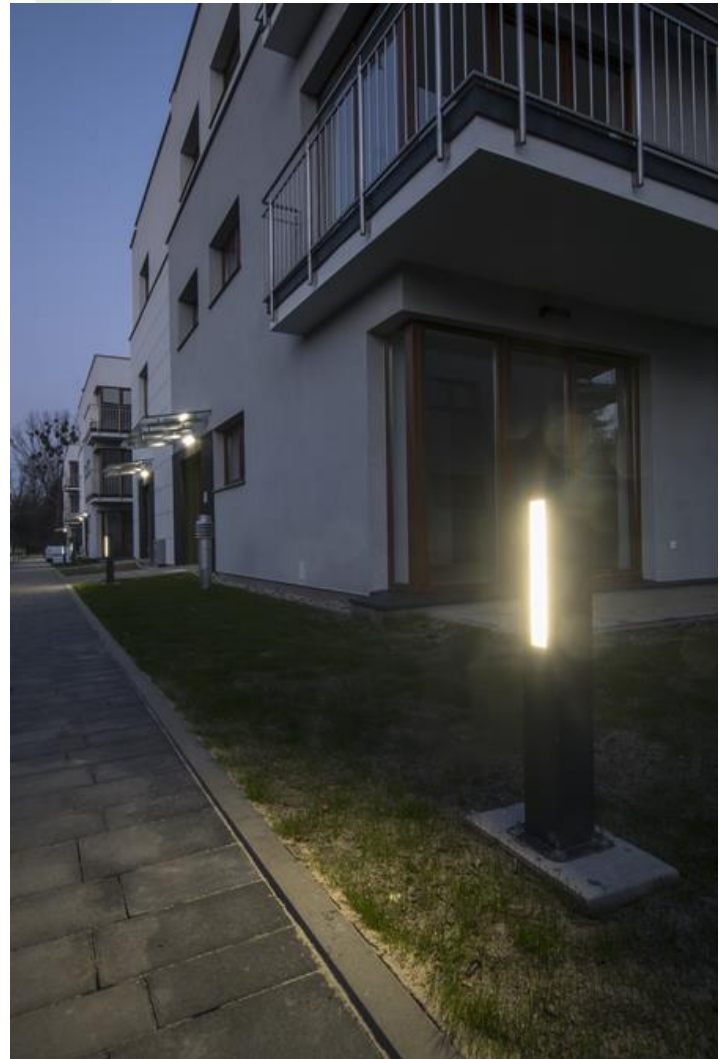


KUBIK POLE SOFT 100 LED

Outdoor luminaires



Outer luminaire to be mounted on a solid surface (concrete, sett, or substructure) equipped with highly efficient energy saving LED sources of the newest generation. Luminaire dedicated to illuminate pedestrians routes such as park alleys, parking site passages, property entrances. Its body made from aluminum (profile size 100x100mm) which is coated by the facade powder used for outdoor activities. PLX opal diffuser



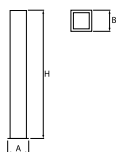
Block of flats Sklepowa 22 street, Warsaw



Main parameters:

Name	Luminous flux LED [lm]	Power of luminaire [W]	Color [K]	Dimensions A x B x H [mm]
KUBIK POLE SOFT 100 LED 3S 3300	3309	21	4000	160 x 160 x 750
KUBIK POLE SOFT 100 LED 4S 4400	4565	24,7	4000	160 x 160 x 750

Technical drawing:



Light and electrical features:

Light source	LED
Voltage	220..240 V, 50..60 Hz
Lifetime of LED sources [h]	60000
Lx/By	L80/B10
CRI	>80
SDCM (LED sources)	3
Operating temperature range [°C]	-25 ÷ 30
Driver	standard on/off (E)
Power factor cos φ	>0,95

Mechanical features:

Assembly	for the ground
Material	aluminum
Color	RAL 9007 (dark gray, metallic, fine structure)
Diffuser	PMMA opal

Note: The power shown refers to the whole system (tolerance +/- 10%).
The given luminous flux refers to LED light sources (tolerance +/- 10% depends on the value of the colour temperature).
Technical data may be changed. Photos of the luminaires may differ from reality.
Date of last update: 09-04-2025