



KUBIK OUT WALL LED

Outdoor luminaires



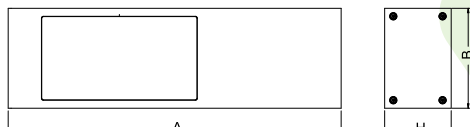
Outdoor luminaire for assembling on a wall, equipped with the highly effective power saving LED sources of the newest generation. The system is designed and optimized for lighting streets, parks, gardens. Corrosion resistant extruded aluminum aesthetic housing and special pole arrangement. Easy installation, tool less, easy maintenance. Optimal performance with a glare-free, full cutoff, uniform lighting distribution.



Main parameters:

Name	Luminous flux LED [lm]	Power of luminaire [W]	Color [K]	Dimensions A x B x H [mm]
KUBIK OUT WALL LED 7500	7450	54	5700	500 x 150 x 100

Technical drawing:



Light and electrical features:

Light source	LED
Voltage	220..240 V, 50..60 Hz
Lifetime of LED sources [h]	60000
Lx/By	L70/B10
CRI	>70
SDCM (LED sources)	5
Operating temperature range [°C]	-40 ÷ 40
Driver	standard on/off (E)

Mechanical features:

Assembly	mounted on wall
Material	aluminum
Color	RAL 9007 (dark gray, metallic, fine structure)
Diffuser	transparent polycarbonate

Note: The power shown refers to the whole system (tolerance +/- 10%).
The given luminous flux refers to LED light sources (tolerance +/- 10% depends on the value of the colour temperature).
Technical data may be changed. Photos of the luminaires may differ from reality.
Date of last update: 11-05-2022