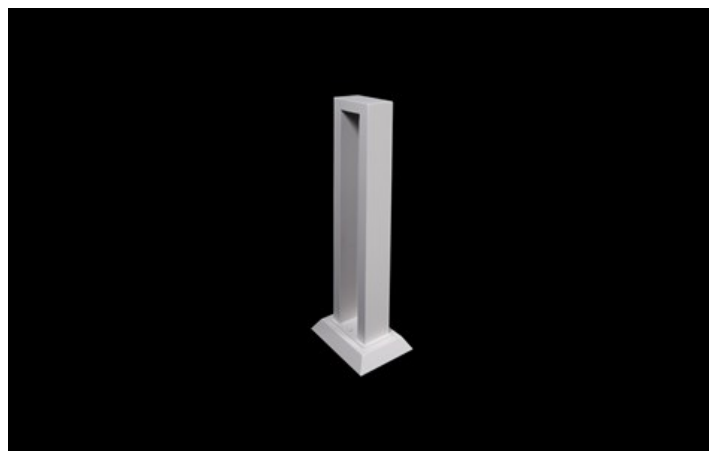
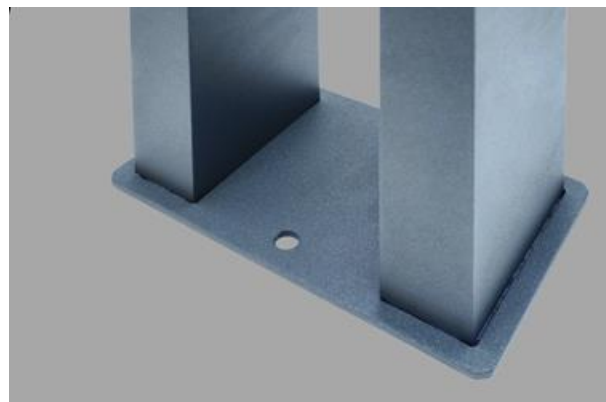
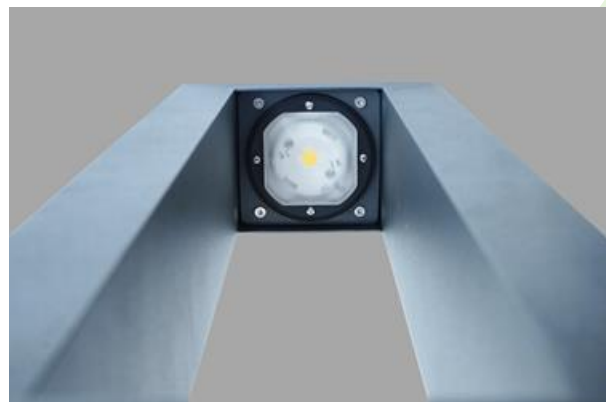




KUBIK 2D LED

Outdoor luminaires



Outdoor luminaire to be mounted on dedicated foundation (version 900mm) or directly on paved basis (version 300mm and 600mm). The product is equipped with the newest generation of highly efficient LED light sources. LED module is additionally sealed with a special lens which at the same time ensures optimal wide light distribution. The housing is resistant to corrosion and is made of aluminum lacquered with facade paint. The product is dedicated for decorative illumination of walking paths, parks, recreational areas, residential areas, gardens and allotment gardens. The level of protection against solid substances, dust and moisture penetration is: IP65



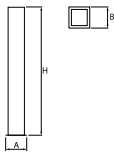
Mazovian Center for the Treatment of Lung Diseases and Tuberculosis, Otwock



Main parameters:

Name	Luminous flux LED [lm]	Power of luminaire [W]	Color [K]	Dimensions A x B x H [mm]
KUBIK 2D LED 1800 L-300	2268	12,5	4000	200 x 120 x 300
KUBIK 2D LED 1800 L-600	2268	12,5	4000	200 x 120 x 600
KUBIK 2D LED 1800 L-900	2268	12,5	4000	200 x 120 x 900

Technical drawing:



Light and electrical features:

Light source	LED
Voltage	220..240 V, 50..60 Hz
Lifetime of LED sources [h]	83000 (1) / 100000 (2) / 100000 (3)
Lx/By	L90/B10 (1) / L80/B10 (2) / L70/B10 (3)
CRI	>80
SDCM (LED sources)	2
Operating temperature range [°C]	-25 ÷ 30
Driver	standard on/off (E)
Power factor cos φ	>0,95

Mechanical features:

Assembly	for the ground
Material	aluminum
Color	RAL 7016 (anthracite, metallic, fine structure)
Diffuser	none

Note: The power shown refers to the whole system (tolerance +/- 10%).
The given luminous flux refers to LED light sources (tolerance +/- 10% depends on the value of the colour temperature).
Technical data may be changed. Photos of the luminaires may differ from reality.
Date of last update: 13-01-2026