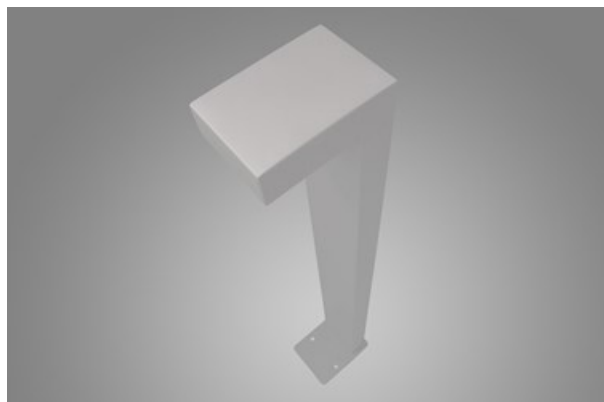
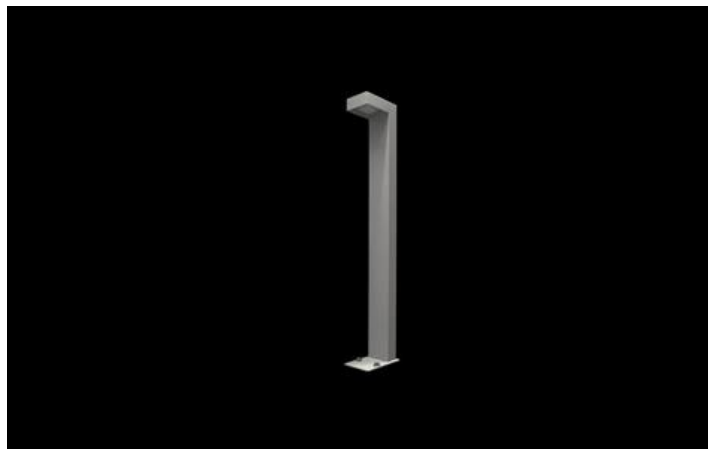




## KUBIK 1D LED

### Outdoor luminaires



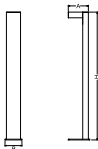
Outdoor luminaire to be mounted on dedicated. The product is equipped with the newest generation of highly efficient LED light sources. LED module is additionally sealed with a special lens which at the same time ensures optimal wide light distribution. The housing is resistant to corrosion and is made of aluminum lacquered with facade paint. The product is dedicated for decorative illumination of walking paths, parks, recreational areas, residential areas, gardens and allotment gardens. The level of protection against solid substances, dust and moisture penetration is: IP65.



Main parameters:

Name	Luminous flux LED [lm]	Power of luminaire [W]	Color [K]	Dimensions A x B x H [mm]
KUBIK 1D LED 1800 L-900	2268 / 1800	12,5 / 14	4000	152 x 120 x 900

Technical drawing:



Light and electrical features:

Light source	LED
Voltage	220..240 V, 50..60 Hz
Lifetime of LED sources [h]	83000 (1) / 100000 (2) / 100000 (3)/100000
Lx/By	L90/B10 (1) / L80/B10 (2) / L70/B10 (3)/L80/B10
CRI	>80
SDCM (LED sources)	2
Operating temperature range [°C]	-25 ÷ 50
Driver	standard on/off (E)
Power factor cos φ	>0,95

\* Variant to specify when ordering

Mechanical features:

Assembly	for the ground
Material	aluminum
Color	RAL 9006 (grey, metallic, fine structure) RAL 7016 (anthracite, metallic, fine structure) *
Diffuser	none

Note: The power shown refers to the whole system (tolerance +/- 10%).  
The given luminous flux refers to LED light sources (tolerance +/- 10% depends on the value of the colour temperature).  
Technical data may be changed. Photos of the luminaires may differ from reality.  
Date of last update: 30-06-2025

**Dodatkowe informacje / Additional information / Zusätzliche Informationen:**

Wersja "T" – na zapytanie / "T" version – for request / "T" Ausführung – nach Sonderwunsch

